



# SOUTH POINT

A MASTER PLANNED COMMUNITY

## THE EVELYN

2,072 SQ.FT.



PRAIRIE



# SOUTH POINT

A MASTER PLANNED COMMUNITY

## THE EVELYN

2,072 SQ.FT.

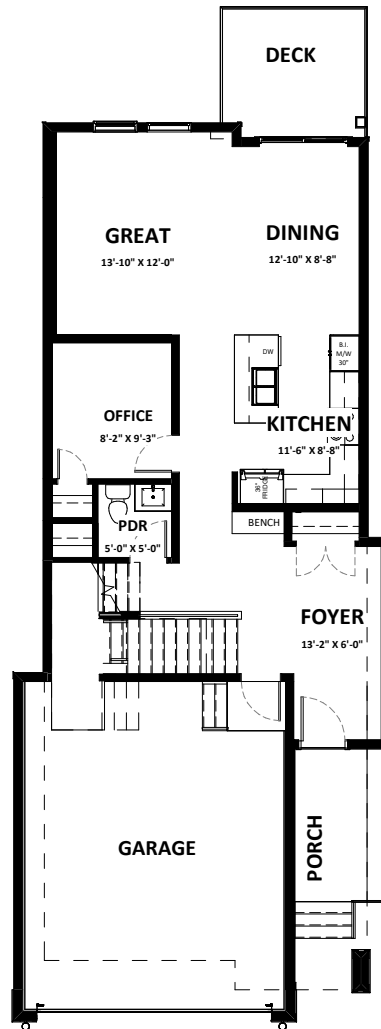
3 BEDROOM

+ OFFICE

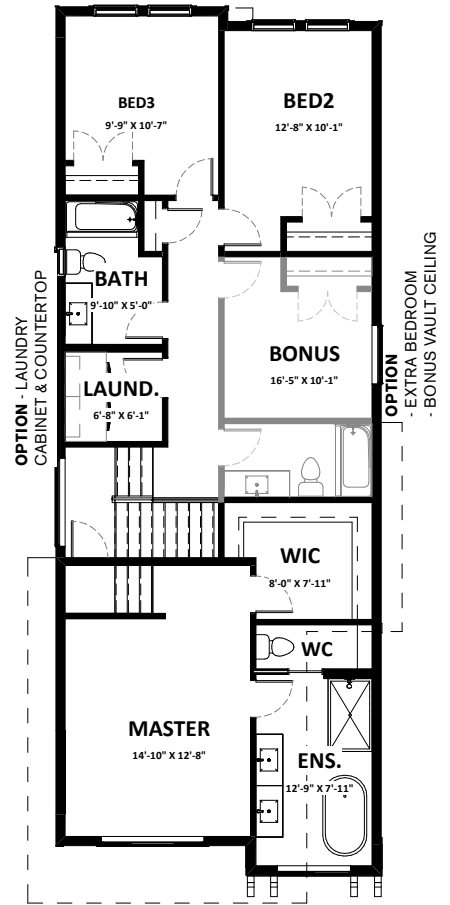
+ BONUS ROOM

3 BATHROOM

848 SQ.FT. UNFINISHED  
BASEMENT



**MAIN 873 SQ.FT. GARAGE 436 SQ. FT.**



**SECOND 1,199 SQ.FT.**



# SOUTH POINT

A MASTER PLANNED COMMUNITY

## THE EVELYN

2,072 SQ.FT.

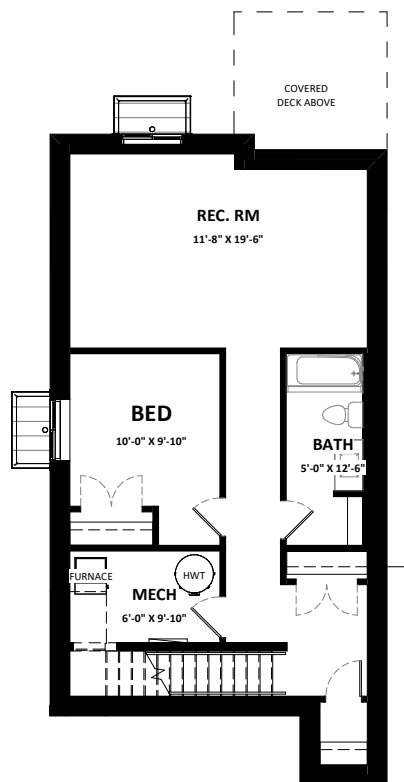
3 BEDROOM

+ OFFICE

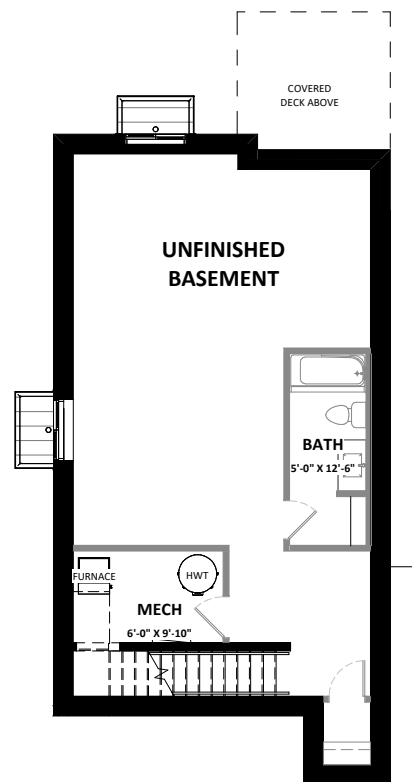
+ BONUS ROOM

3 BATHROOM

848 SQ.FT. UNFINISHED  
BASEMENT



**FINISHED BASEMENT 848 SQ.FT.**  
(OPTIONAL)



**UNFINISHED BASEMENT 759 SQ.FT.**