



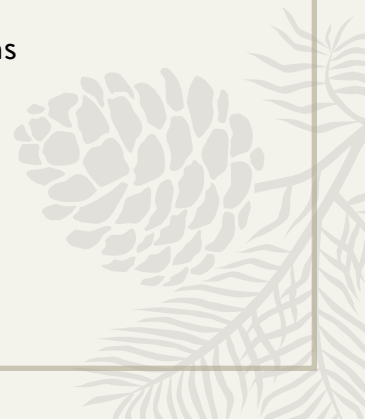
**HARRISON  
HIGHLANDS**

HARRISONHIGHLANDS.COM



## DUPLEX HOMES

3 bedrooms and 2 bathrooms  
1,718 to 1,781 sq. ft.



## Welcome Home

- Introducing the largest master-planned river and mountain view community in the Fraser Valley.
- Every home has been thoughtfully designed to maximize natural light with large windows that work with the lot's natural topography.
- A thoughtful mix of housing styles and elevations create an estate community feel and encourage diversity among its residents.
- Striking heritage architecture with rich finishes including Hardie siding and cultured stone accents.
- Purposefully laid out floorplans that maximize the space with essential home features including a welcoming foyer, mudroom, and a powder room.
- Enjoy the outdoors with covered patios.

## Thoughtful Conveniences

- Advanced air source heat pump providing heating and air conditioning.
- 50 gallon electric hot water tank and a programmable thermostat.
- Two hose bibs and two electric outlets; front & rear.

## Rich Interiors

- Open & bright homes with dramatic 9ft ceilings in main and vaulted ceilings in the master bedroom.
- Multiple oversized windows that flood living spaces with natural light.
- Designer laminate flooring throughout main floor with 6" baseboards, plush carpeting, hand-set floor tile in ensuite, main bath, powder room and laundry.
- Heritage series 6ft interior doors with 3" door casings.
- Large master bedroom with flat profile windows.
- Walk-in closets in master bedroom.

## Safety & Security

- Prewired security system with camera rough-ins.
- Hard-wired smoke detector, CO monitors.
- Comprehensive Home Warranty insurance including 2 years coverage for materials, 5 years coverage for building envelope and 10 years coverage for structural defects.

## Gourmet Family Kitchens

- Choose from two designer color schemes, 'Classic' with modern brushed chrome hardware or 'Farmhouse' with matte black hardware.
- Caesarstone quartz counters with hand-set glazed porcelain tile backsplash.
- Samsung stainless steel appliances including 33" fridge, 30" electric range, above range hood fan and 24" built-in dishwasher.

## Luxurious Bathrooms

- Spa-inspired ensuite includes dual porcelain sinks, hand-set porcelain tiles, walk-in shower with glass surround, soaker bathtub and oversized vanity mirror.

## Options & Upgrades

- Ask our sales team for details on how you can personalize your home with color schemes and lighting packages.



# FEATURES

## Duplex Home

In continuing effort to improve our homes, Odessa reserves the right to make any modifications or substitutions without notice, should they be necessary. Final dimensions, square footage and specifications for floorplans may vary. See a sales representative for complete details. See our Privacy Policy.



# MASTER SITE PLAN



- SINGLE FAMILY SLAB ON GRADE LOTS
- SINGLE FAMILY WITH BASEMENT
- DUPLEX



# SITE PLAN

## PHASE 3

FRONT ELEVATION

REAR ELEVATION



Harlequin 1

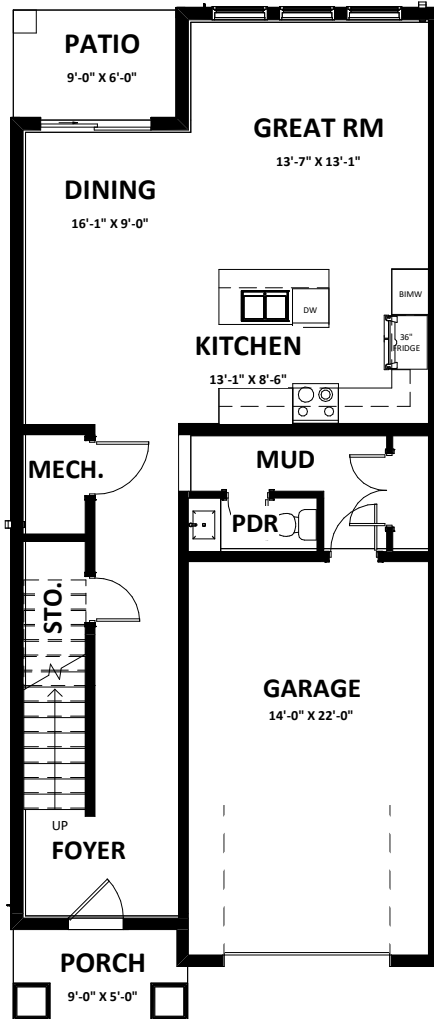
Harlequin 2

Harlequin 1

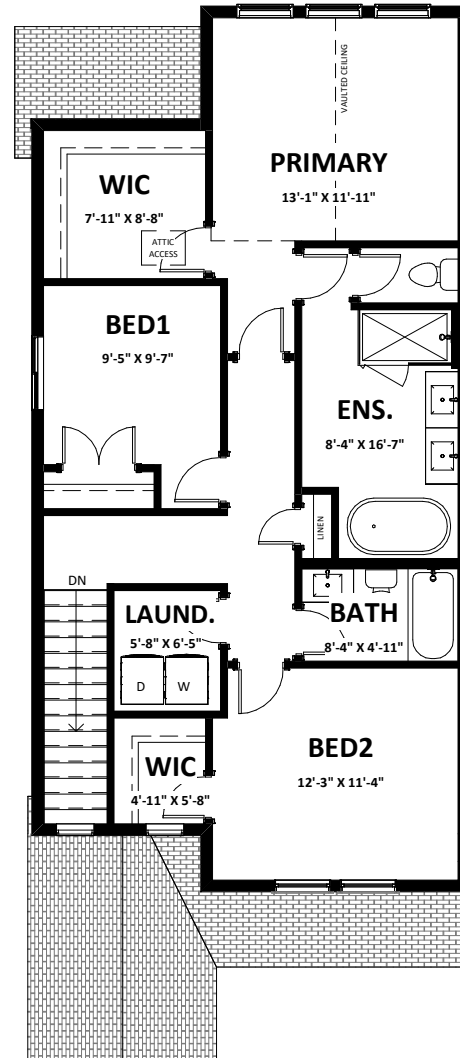
Harlequin 2



**HARLEQUIN**  
DUPLEXES



**Main** 826 sq.ft.  
**Garage** 298 sq.ft.

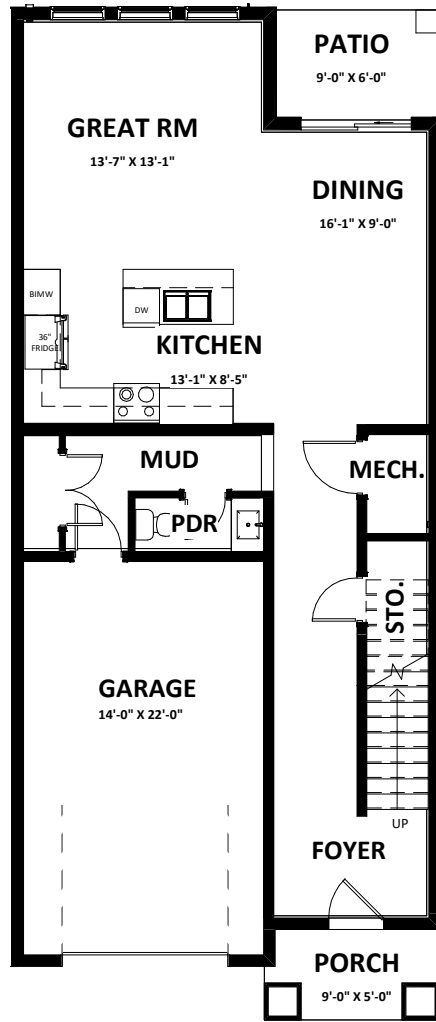


**Second** 955 sq.ft.

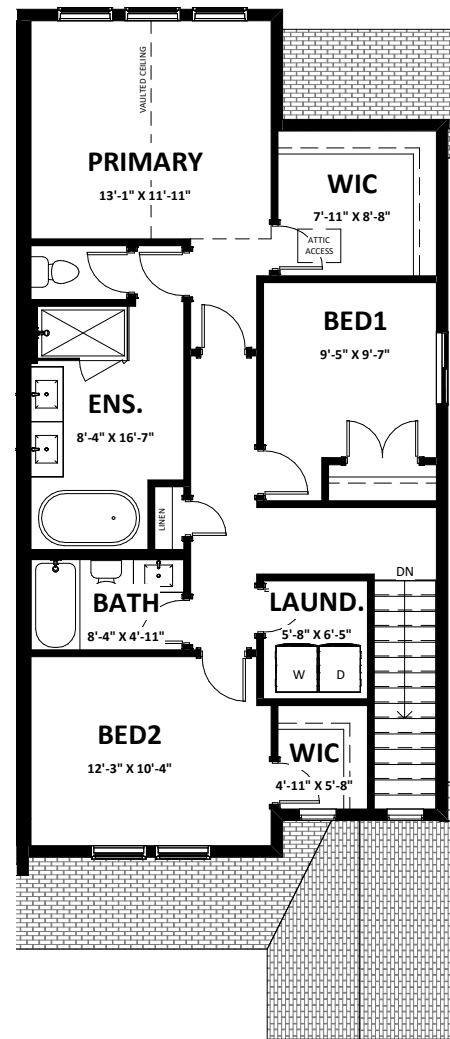


# HARLEQUIN 1

3 Bedroom | 2.5 Bathroom  
1,781 sq.ft.



**Main** 826 sq.ft.  
**Garage** 298 sq.ft.



**Second** 941 sq.ft.



## HARLEQUIN 2

3 Bedroom | 2.5 Bathroom  
1,767 sq.ft.

FRONT ELEVATION



Starling 1

Starling 2

REAR ELEVATION



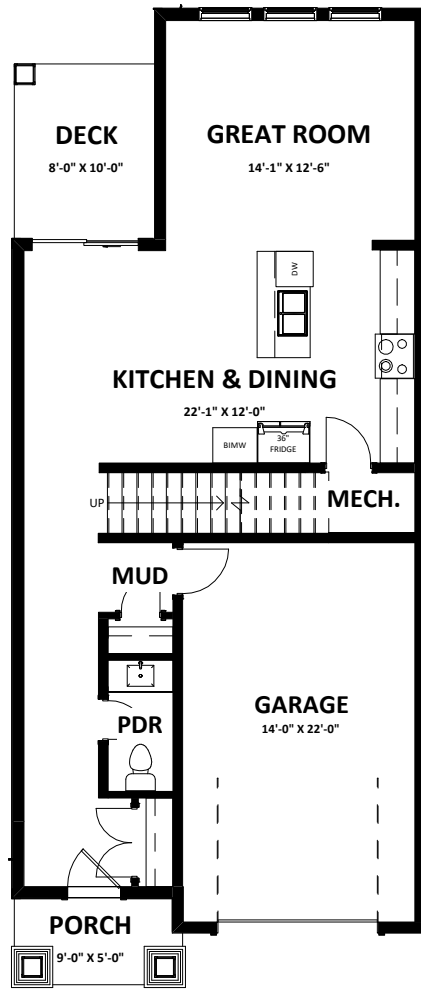
Starling 1

Starling 2

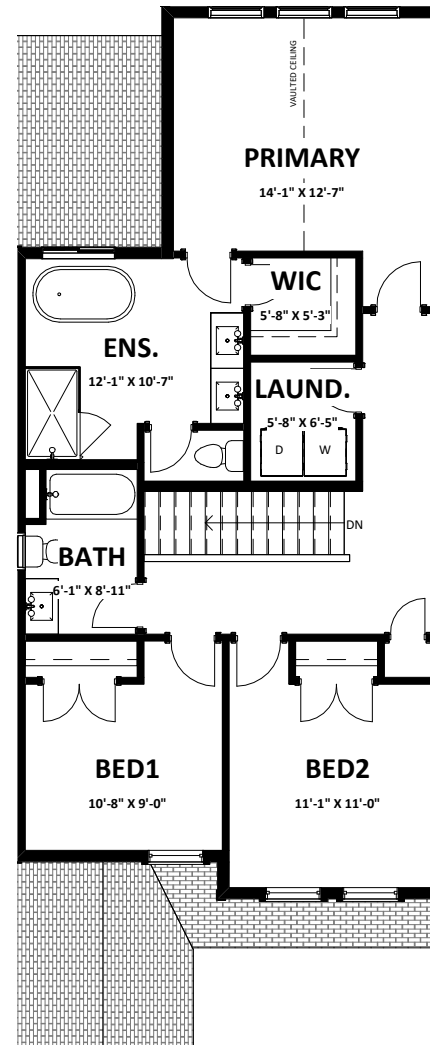


**STARLING**  
DUPLEXES





**Main** 775 sq.ft.  
**Garage** 299 sq.ft.

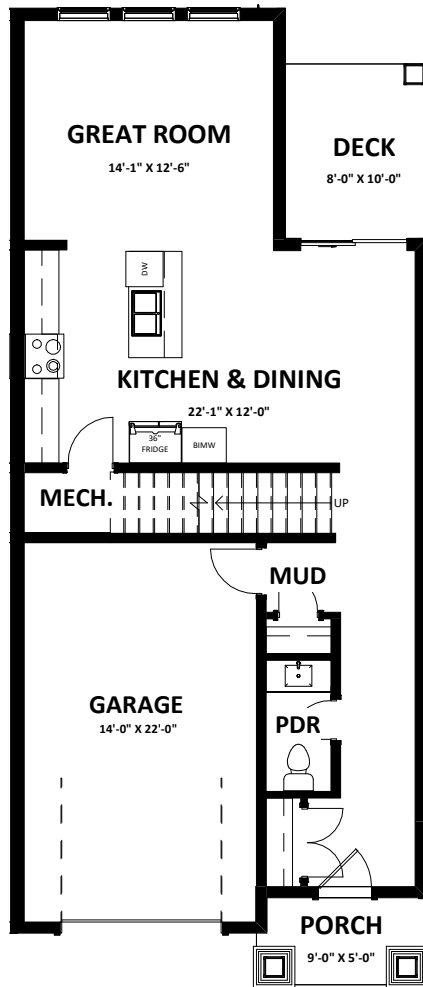


**Second** 943 sq.ft.

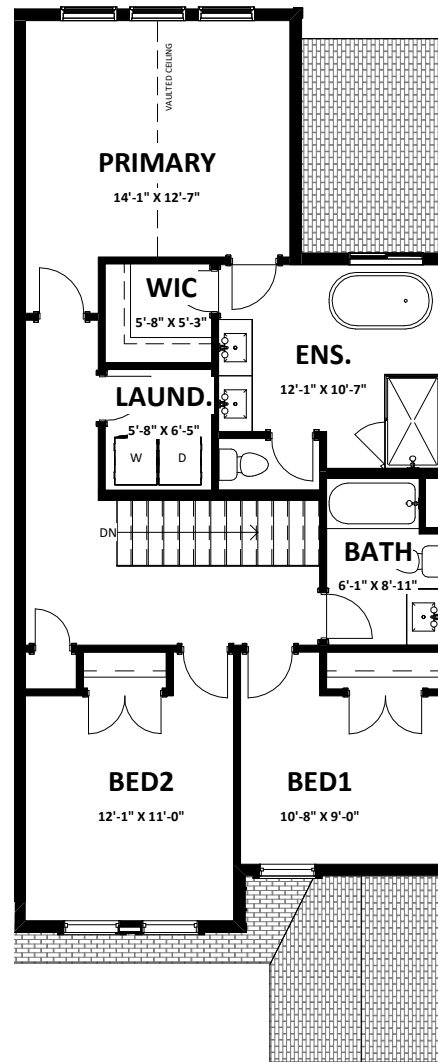


# STARLING 1

3 Bedroom | 2.5 Bathroom  
1,718 sq.ft.



**Main** 775 sq.ft.  
**Garage** 299 sq.ft.



**Second** 955 sq.ft.



## STARLING 2

3 Bedroom | 2.5 Bathroom  
1,730 sq.ft.