

FRONT ELEVATION

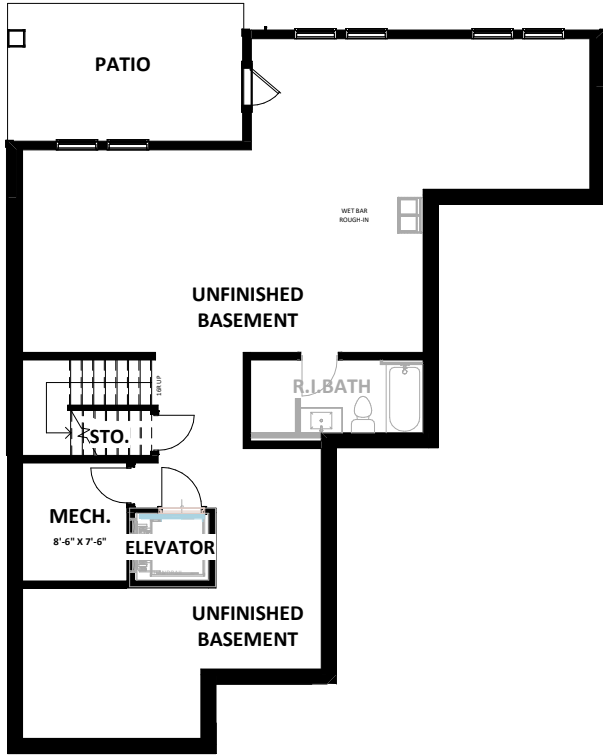


REAR ELEVATION

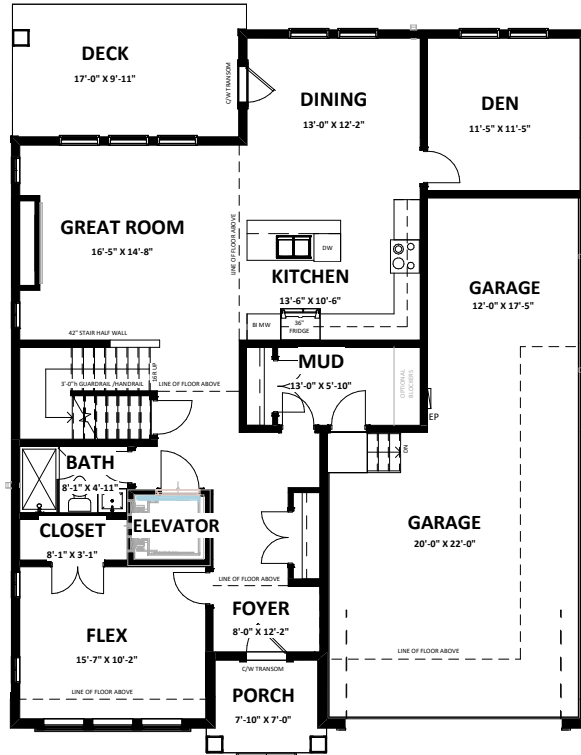


## ROSS 2 CRAFTSMAN (Corner)

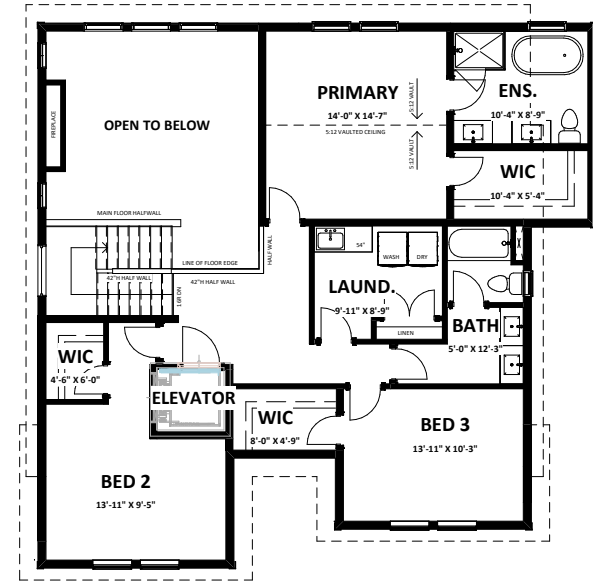
SINGLE FAMILY HOMES WITH WALK OUT BASEMENT



Unfinished Basement 1,421 sq.ft.



Main 1,417 sq.ft.  
Garage 643 sq.ft.



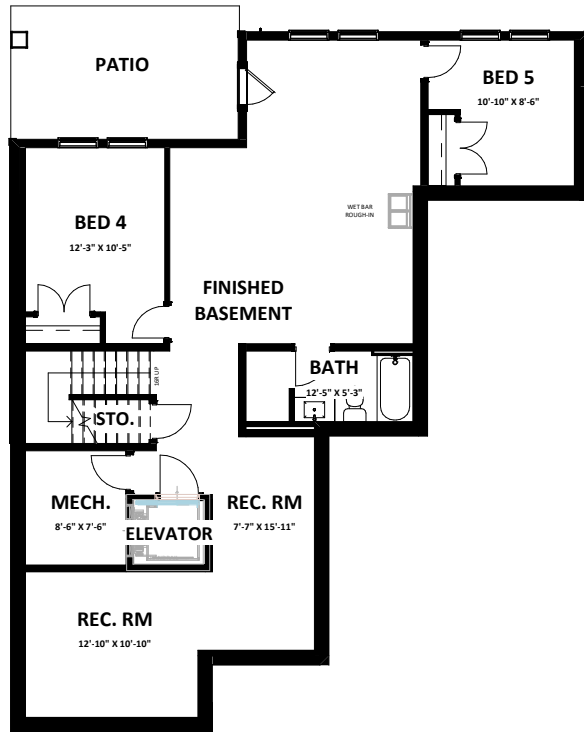
Second 1,198 sq.ft.



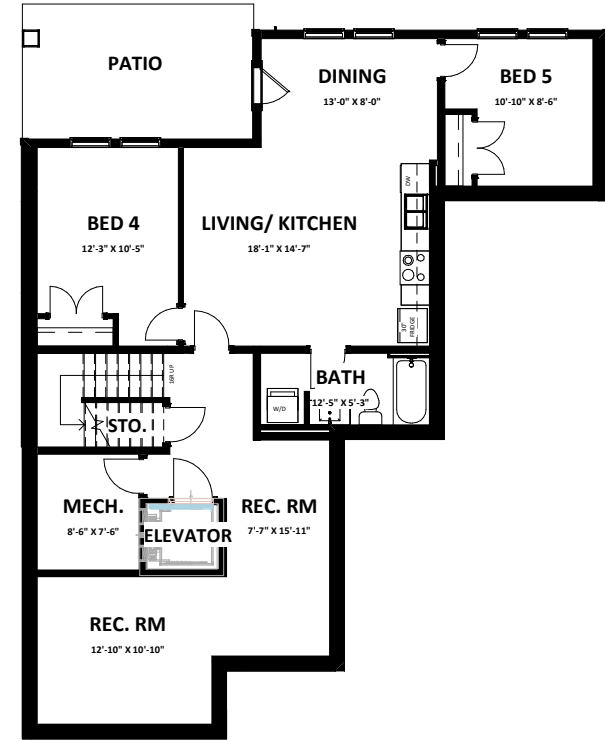
## ROSS 2 CRAFTSMAN (Corner)

3 Bedroom + Den + Flex | 3 Bathroom

2,615 sq.ft. + 1,421 sq.ft. Unfinished Basement



**Finished Basement 1,357 sq.ft.**



**Basement Suite 835 sq.ft.**



## ROSS 2 CRAFTSMAN (Corner)

Basement Suite Option  
835 sq.ft.