



# SOUTH VILLAGE CONDOS AT LATIMER HEIGHTS





# SOUTH VILLAGE CONDOS AT LATIMER HEIGHTS

## SITE PLAN





## SOUTH VILLAGE CONDOS

AT LATIMER HEIGHTS

### LIVE IN THE HEART OF IT ALL

- Located adjacent to Latimer Heights Community Pond – enjoy the best view of the neighborhood.
- Connected to the neighborhood walking and trail network that offers dog parks, bike paths and sports fields.
- Across from the South Village Condos is Latimer Village- a walkable European style retail village boasting local shops, restaurants, cafes – linked by a park and a scenic pond with pedestrian bridge.
- Easy access to Highway 1 to Coquitlam, Burnaby and Vancouver or Abbotsford and the Fraser Valley.
- A short walk to Carvolth bus exchange, largest transit hub in Langley for a seamless bus ride to sky train station for easy commute to Vancouver Downtown.
- Conveniently located close to Langley Event Centre, Walnut Grove Community Centre, and Willoughby Town Centre.

### STEP INSIDE

- Sophisticated collection of two six-storey modern buildings featuring one-two-and-three-bedroom condos with flex options.
- Smartly designed homes with open floor plans and two on trend color schemes to choose from – Storm and Sand.
- Bright living spaces with abundant natural light from expansive windows.
- Large contemporary livable spaces with 9' ceilings and spacious secondary bedrooms.
- Energy efficient and compact Air Conditioning system in the main living area.
- Durable and tasteful hardwood-style laminate flooring throughout.
- Modern, sleek, and slim quartz countertops.
- USB charging stations throughout.

### KITCHENS THAT INSPIRE

- Modern recessed and under-cabinet lighting brightens and adds ambiance.
- Soft close cabinets and drawers.

- Enjoy everyday luxury of an island or peninsula with extra storage.
- Contemporary stainless steel basin kitchen sink.
- Surprisingly plentiful cabinet storage plus a bonus spacious pantry cupboard with pull out shelving (most homes).
- Complete Samsung series home appliance package:
  - Separate laundry/closet with energy efficient front-loading washer and dryer
  - Stainless steel 5-burner gas cooktop with integrated hood fan
  - Stainless steel under cabinet built-in microwave
  - Double French door fridge with convenient slide-out freezer
  - Stainless steel dishwasher with integrated functions

### REJUVENATING BATHROOMS

- Luxuriate in a deep soaker tub with stylish tile surround.
- Beautifully designed soft-close oak laminate cabinetry with sophisticated hardware.
- Main bathroom features elegant accent wall with floor to ceiling tiles.
- Oversized designer selected floor tiles add to modern timeless home interiors.
- Contemporary faucets with undermount sinks and quartz countertops.
- Frameless glass showers in ensuite bathrooms.

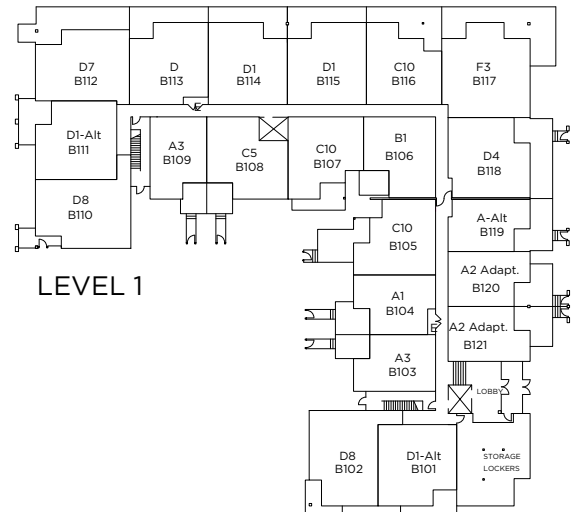
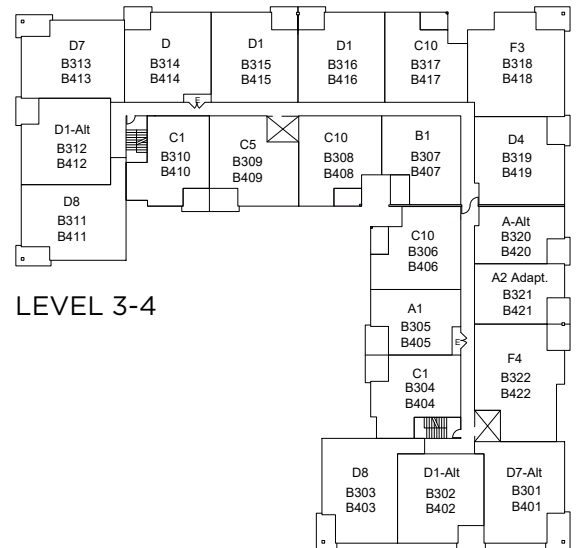
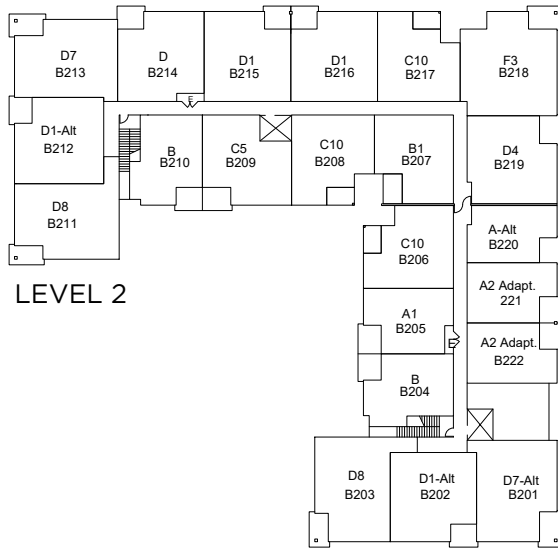
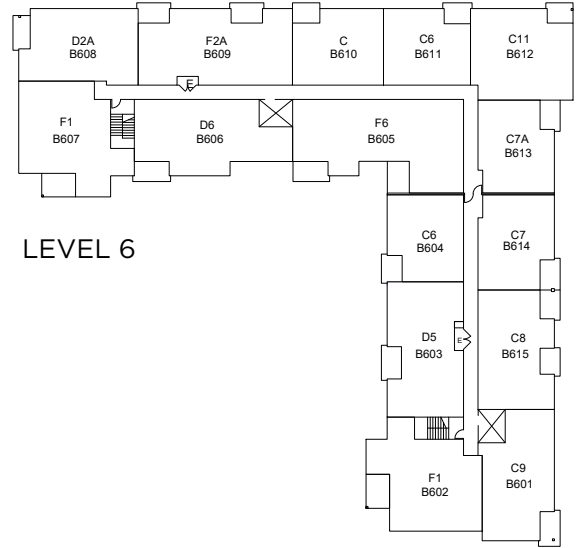
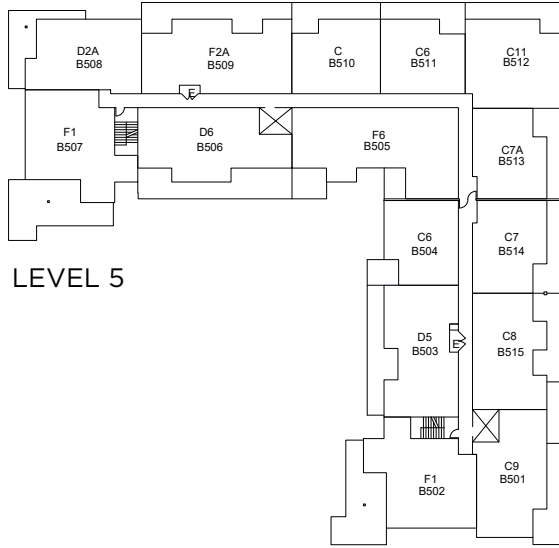
### PROUDLY BUILT BY VESTA

- Vesta built homes come with the promise of quality and exceptional workmanship.
- A designated homeowner portal for access to customer service, warranty information, home care tips, etc.
- All homes include secure underground parking, EV charging stations and storage.



**SOUTH VILLAGE CONDOS**  
AT LATIMER HEIGHTS

**KEY PLAN**  
**BUILDING B**

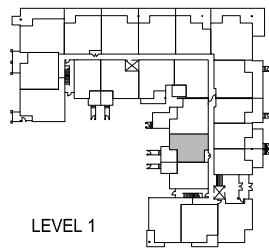
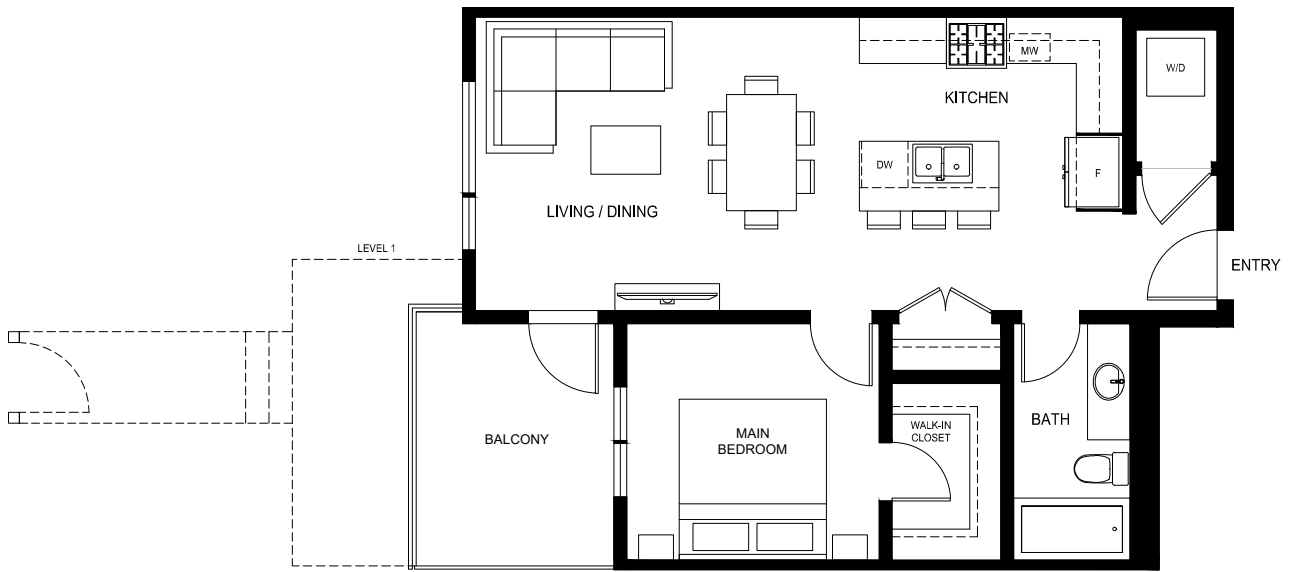




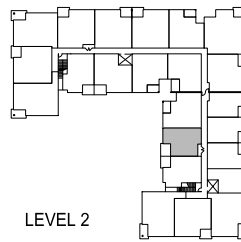
**SOUTH VILLAGE CONDOS**  
AT LATIMER HEIGHTS

**PLAN A1**  
688 SQ.FT.  
1 BED | 1 BATH

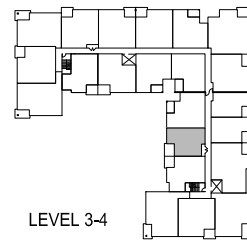
ONE BEDROOM



LEVEL 1



LEVEL 2



LEVEL 3-4





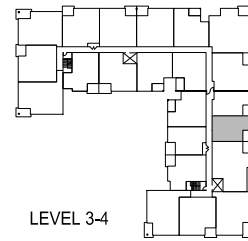
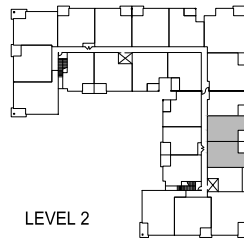
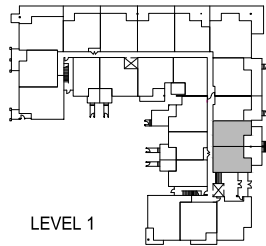
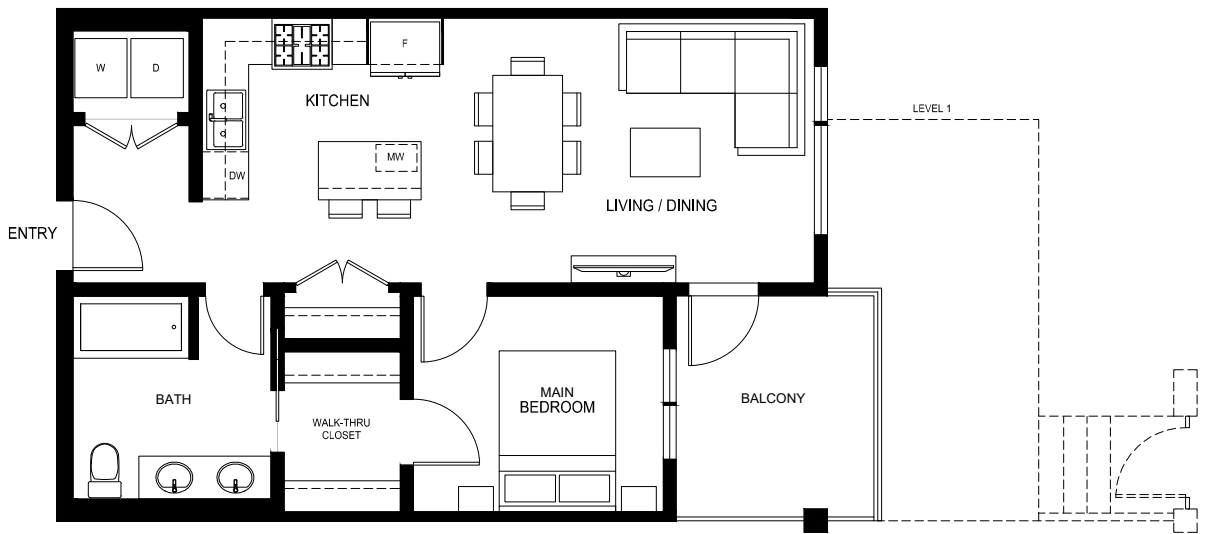
**SOUTH VILLAGE CONDOS**  
AT LATIMER HEIGHTS

**PLAN A2 adapt.**

658 SQ.FT.

1 BED | 1 BATH

ONE BEDROOM

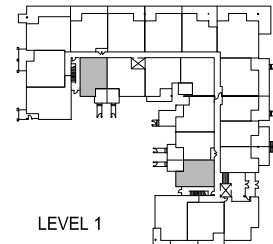
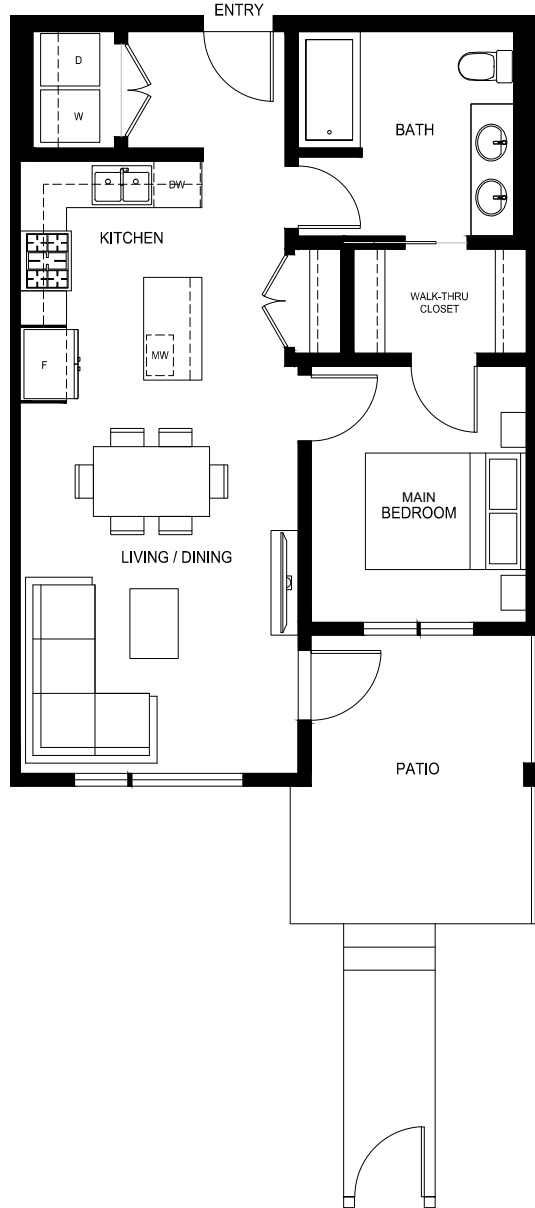




**SOUTH VILLAGE CONDOS**  
AT LATIMER HEIGHTS

**PLAN A3**  
678 SQ.FT.  
1 BED | 1 BATH

ONE BEDROOM



LEVEL 1

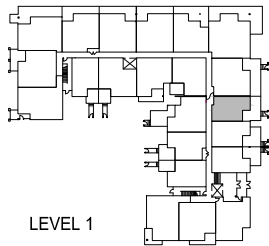




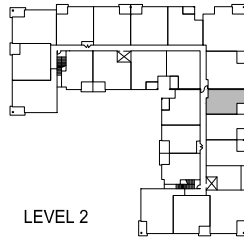
**SOUTH VILLAGE CONDOS**  
AT LATIMER HEIGHTS

**PLAN A-alt**  
623 SQ.FT.  
1 BED | 1 BATH

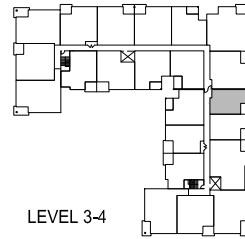
ONE BEDROOM



LEVEL 1



LEVEL 2



LEVEL 3-4







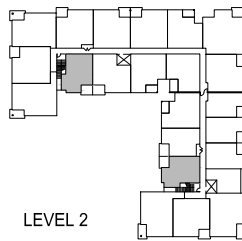
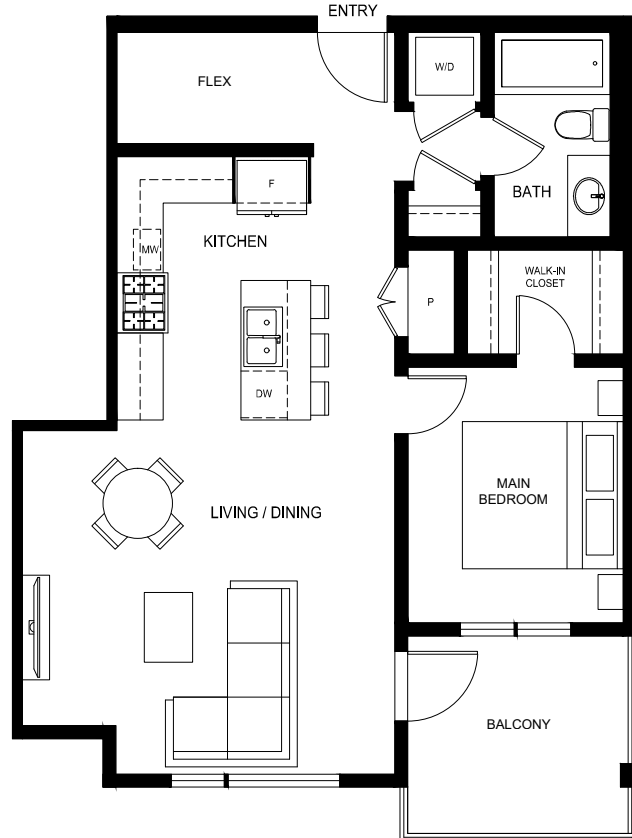
**SOUTH VILLAGE CONDOS**  
AT LATIMER HEIGHTS

**PLAN B**

731 SQ.FT.

1 BED + FLEX | 1 BATH

ONE BEDROOM





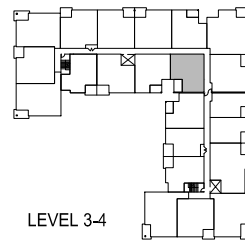
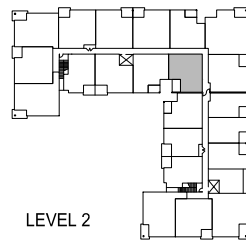
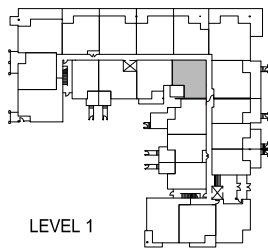
# SOUTH VILLAGE CONDOS AT LATIMER HEIGHTS

## PLAN B1

813 SQ.FT.

1 BED + FLEX | 2 BATH

ONE BEDROOM

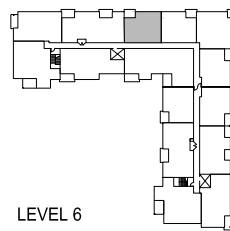
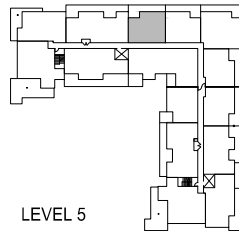
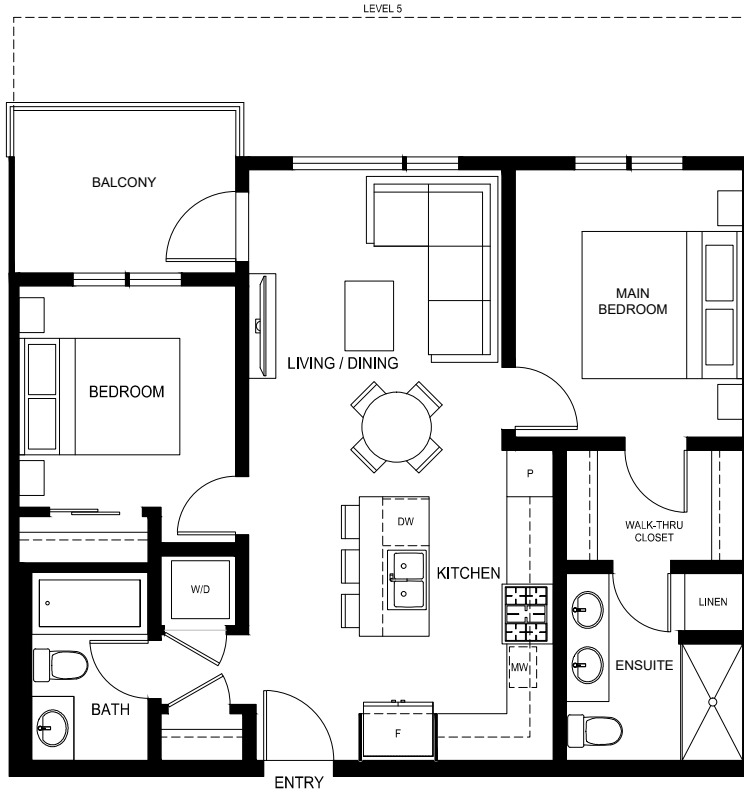




# SOUTH VILLAGE CONDOS AT LATIMER HEIGHTS

## PLAN C 793 SQ.FT. 2 BED | 2 BATH

TWO BEDROOM

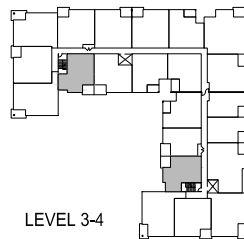
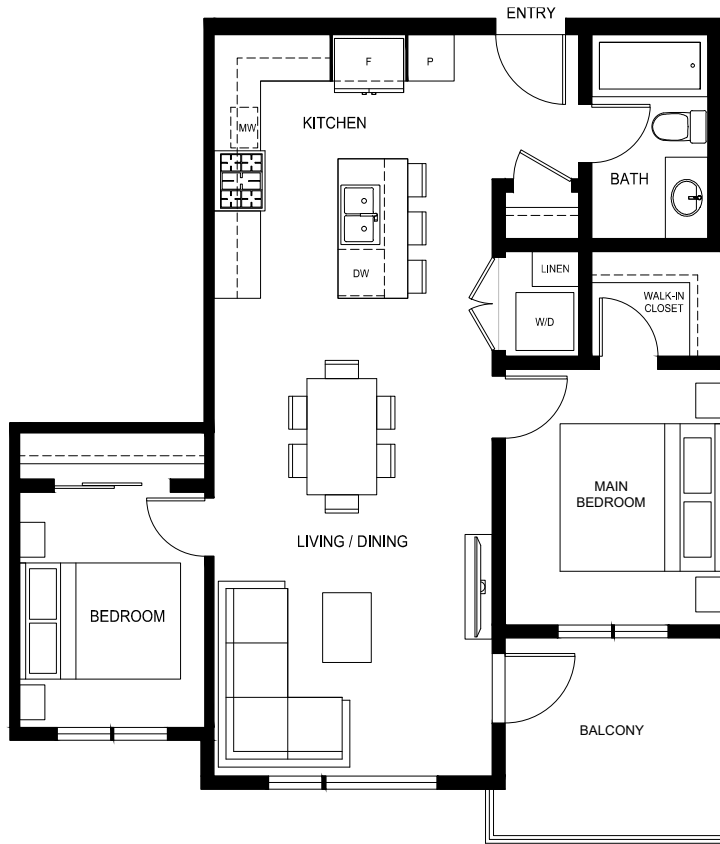




**SOUTH VILLAGE CONDOS**  
AT LATIMER HEIGHTS

**PLAN C1**  
789 SQ.FT.  
2 BED | 1 BATH

**TWO BEDROOM**



LEVEL 3-4

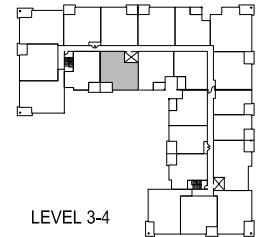
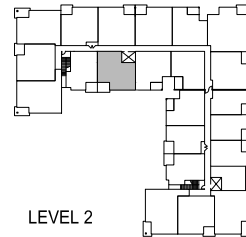
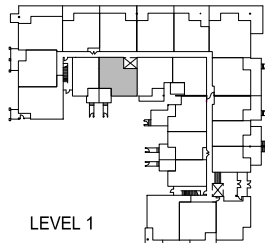
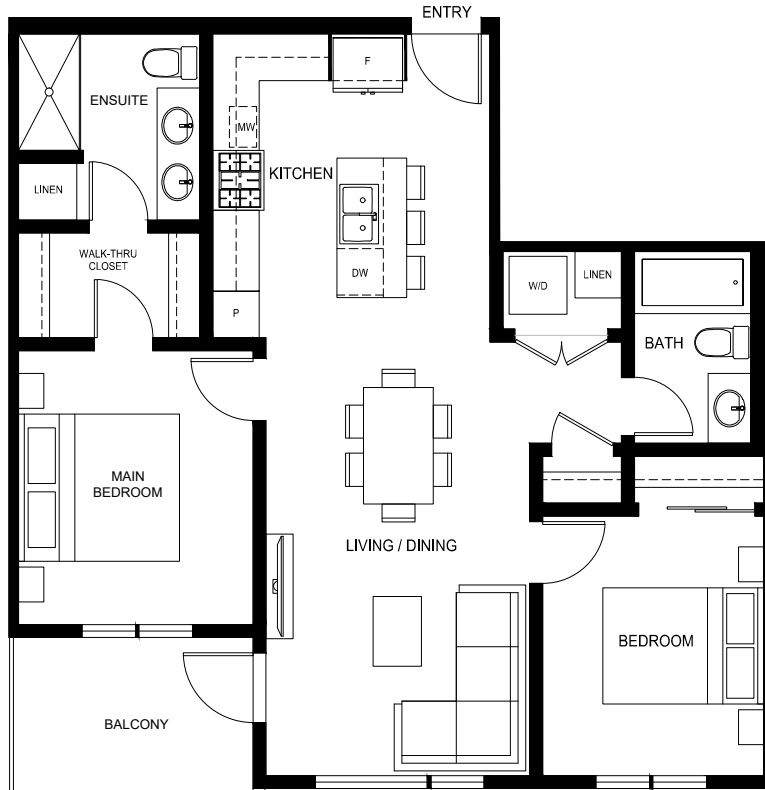




**SOUTH VILLAGE CONDOS**  
AT LATIMER HEIGHTS

**PLAN C5**  
899 SQ.FT.  
2 BED | 2 BATH

**TWO BEDROOM**

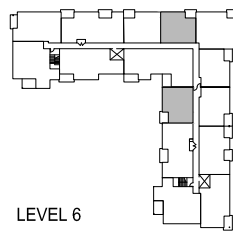
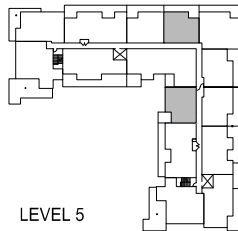
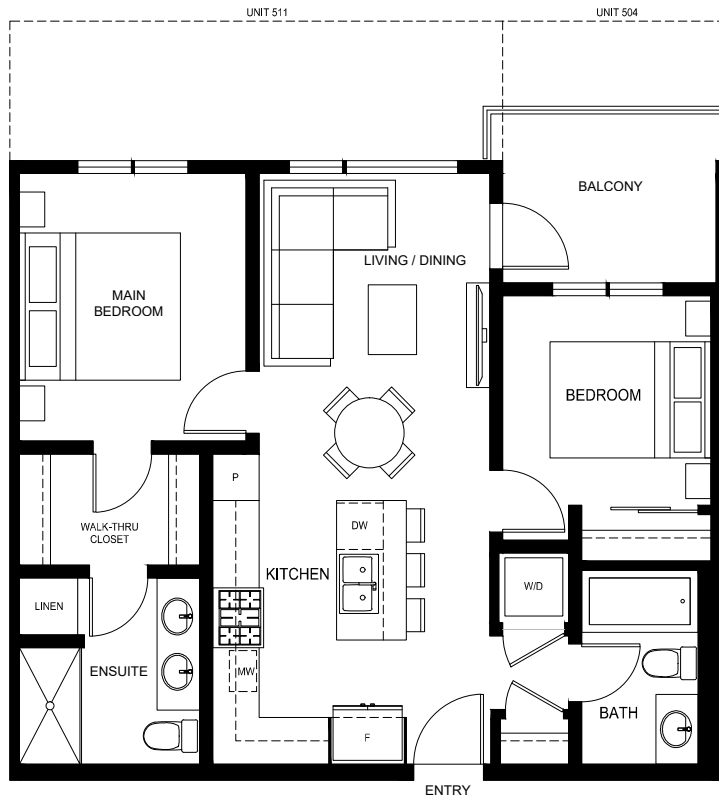




# SOUTH VILLAGE CONDOS AT LATIMER HEIGHTS

## PLAN C6 755 SQ.FT. 2 BED | 2 BATH

TWO BEDROOM

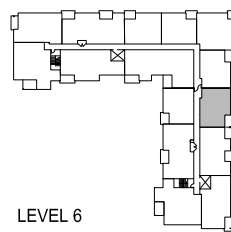
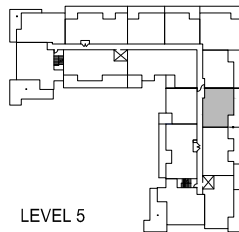
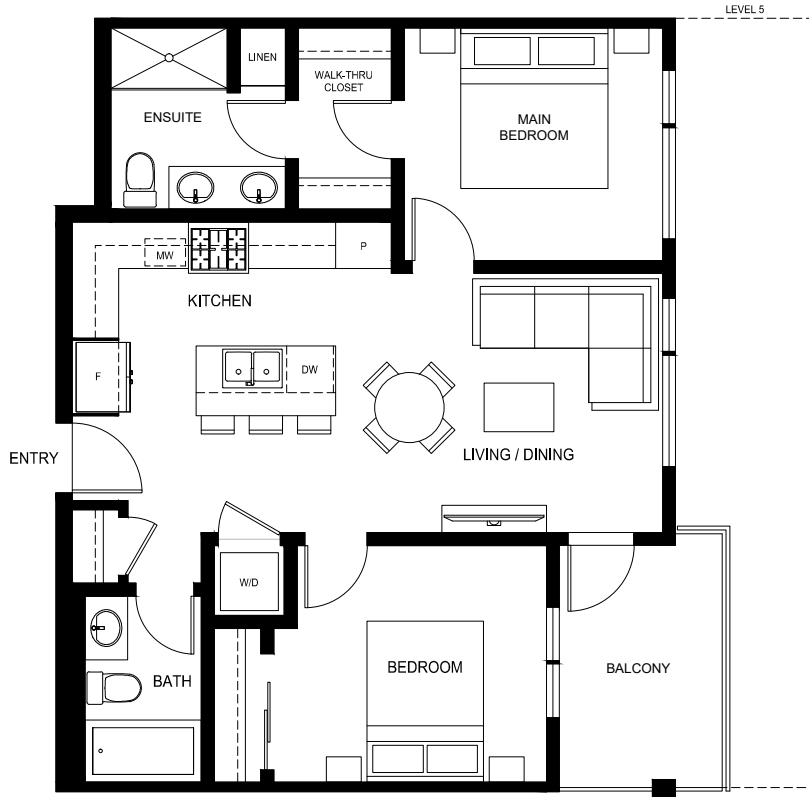




**SOUTH VILLAGE CONDOS**  
AT LATIMER HEIGHTS

**PLAN C7**  
808 SQ.FT.  
2 BED | 2 BATH

**TWO BEDROOM**

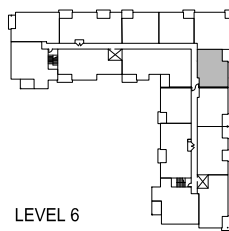
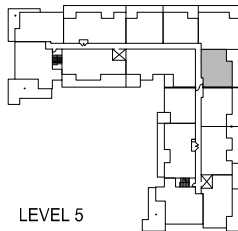
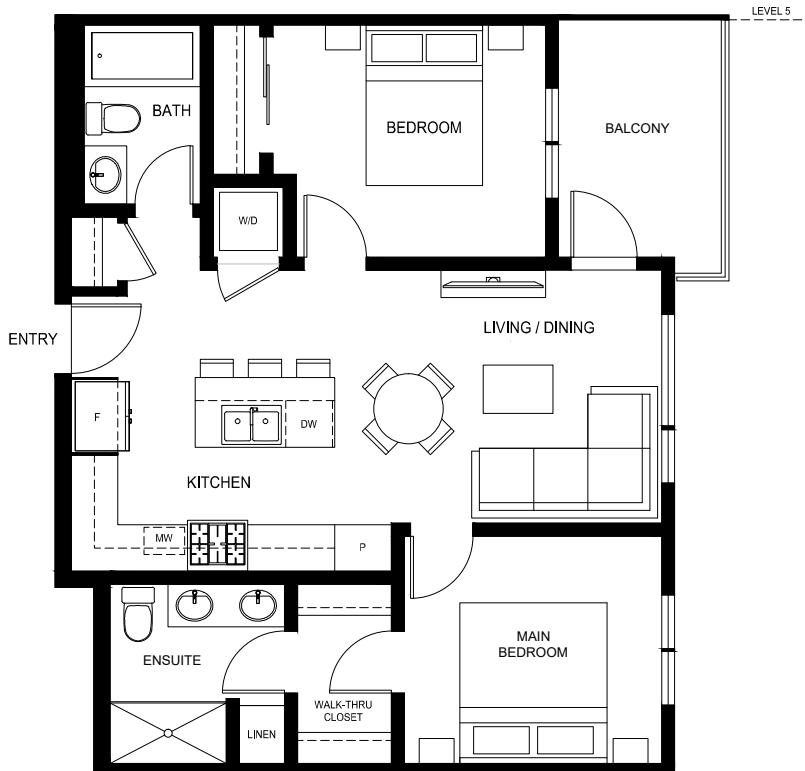




**SOUTH VILLAGE CONDOS**  
AT LATIMER HEIGHTS

**TWO BEDROOM**

**PLAN C7a**  
780 SQ.FT.  
2 BED | 2 BATH







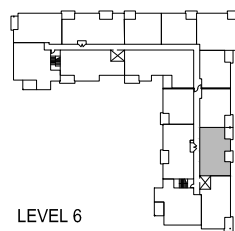
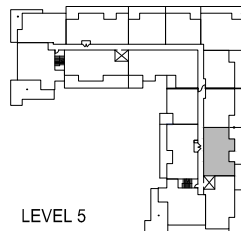
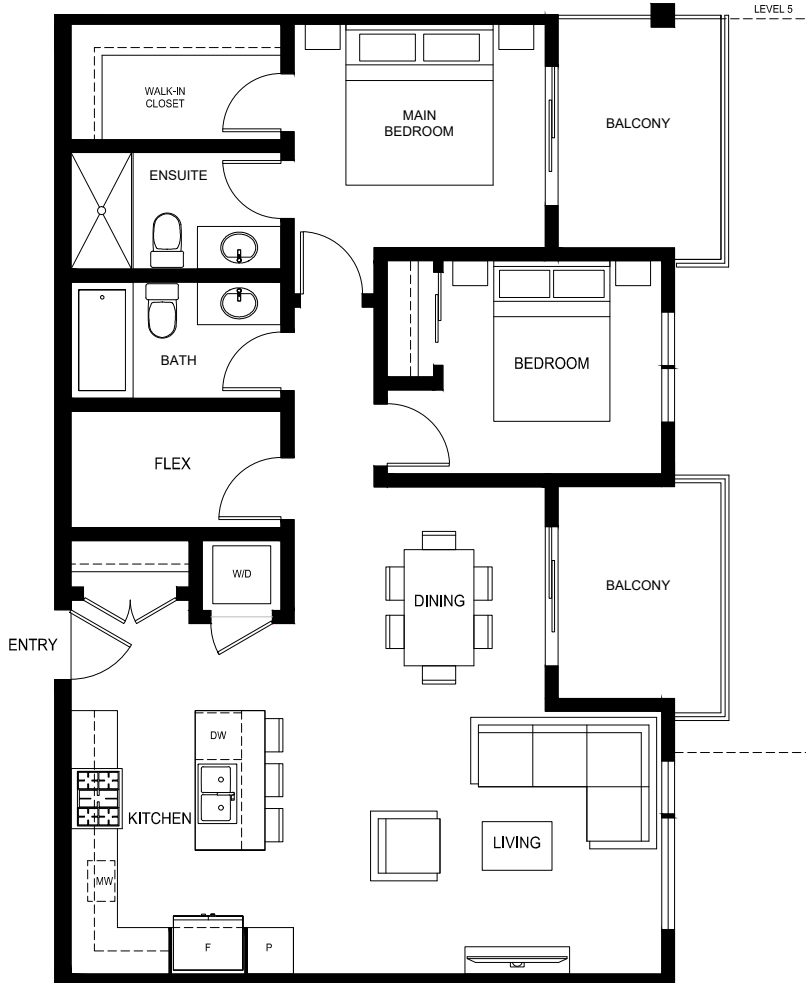
**SOUTH VILLAGE CONDOS**  
AT LATIMER HEIGHTS

**PLAN C8**

1,000 SQ.FT.

2 BED + FLEX | 2 BATH

**TWO BEDROOM**





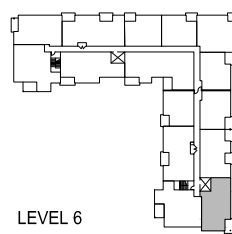
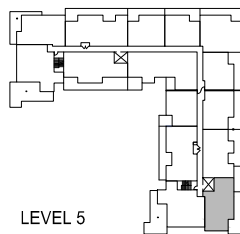
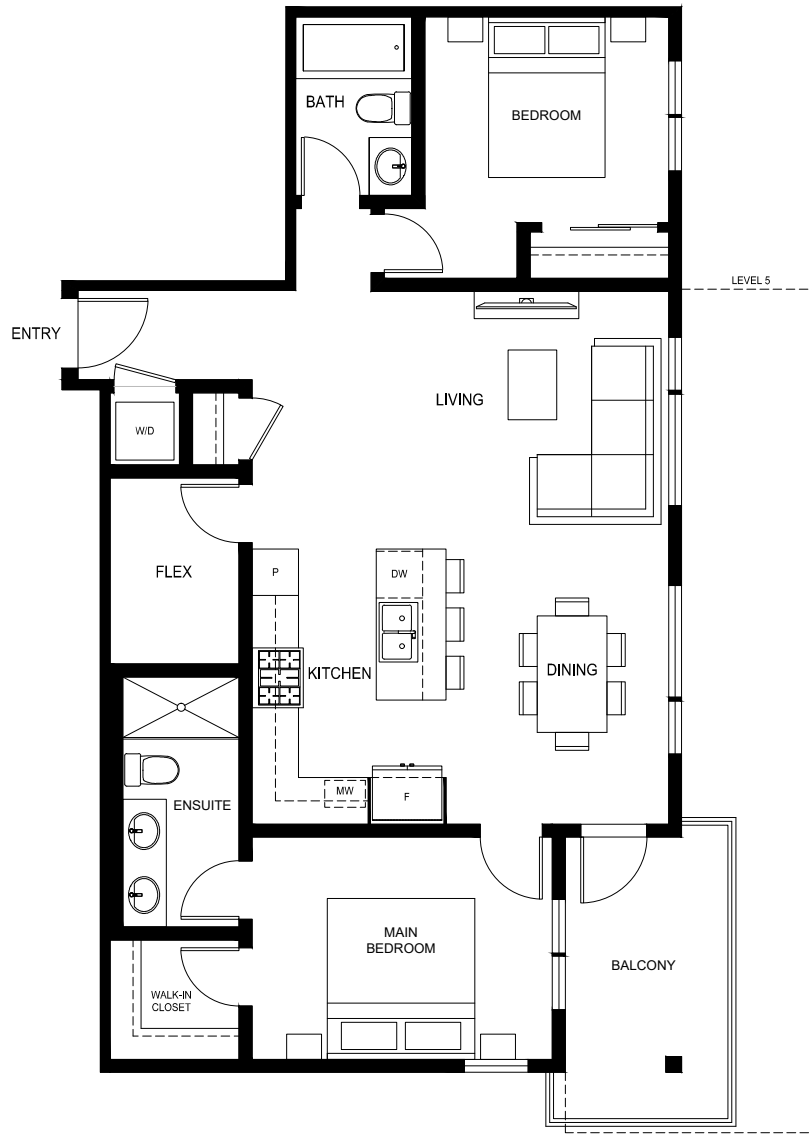
**SOUTH VILLAGE CONDOS**  
AT LATIMER HEIGHTS

**PLAN C9**

1,008 SQ.FT.

2 BED + FLEX | 2 BATH

**TWO BEDROOM**

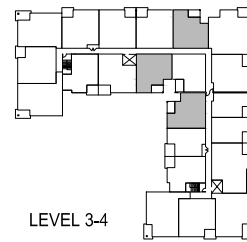
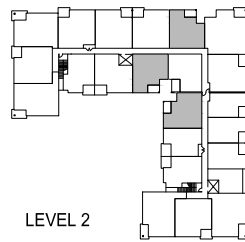
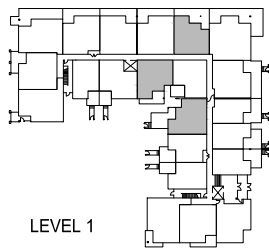




# SOUTH VILLAGE CONDOS AT LATIMER HEIGHTS

## PLAN C10 847 SQ.FT. 2 BED | 1 BATH

TWO BEDROOM

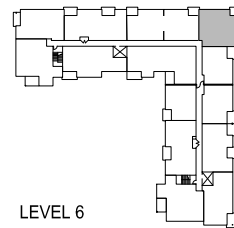
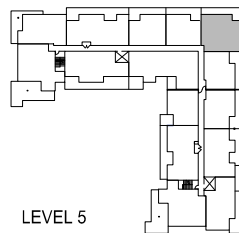
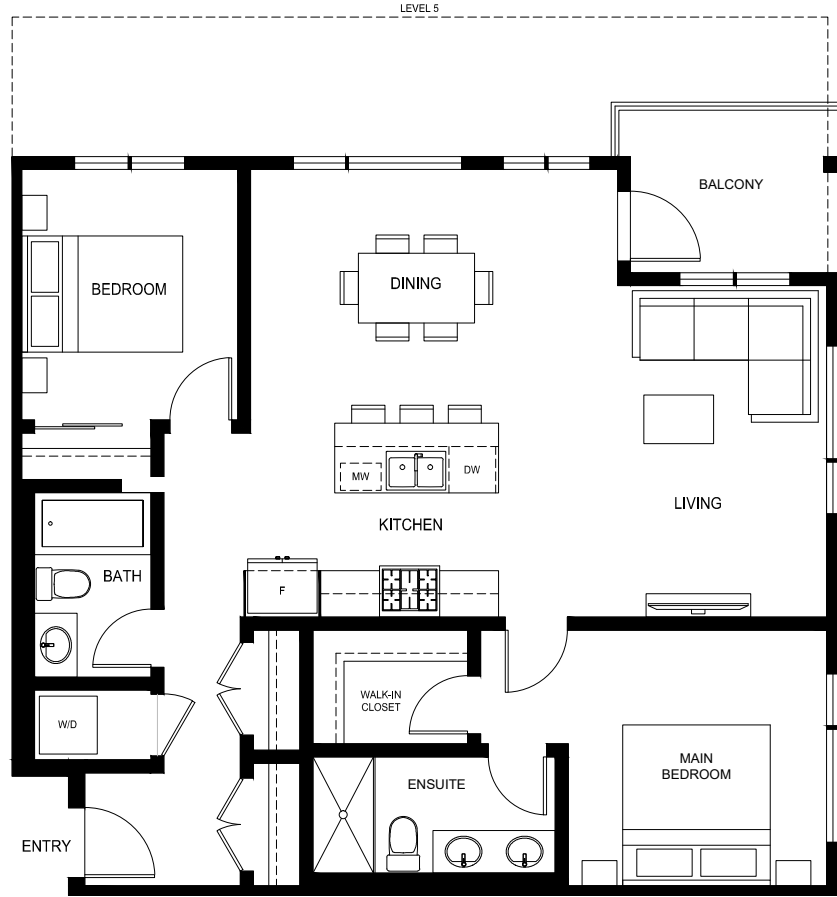




**SOUTH VILLAGE CONDOS**  
AT LATIMER HEIGHTS

**PLAN C11**  
1,072 SQ.FT.  
2 BED | 2 BATH

**TWO BEDROOM**





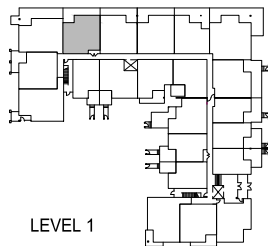
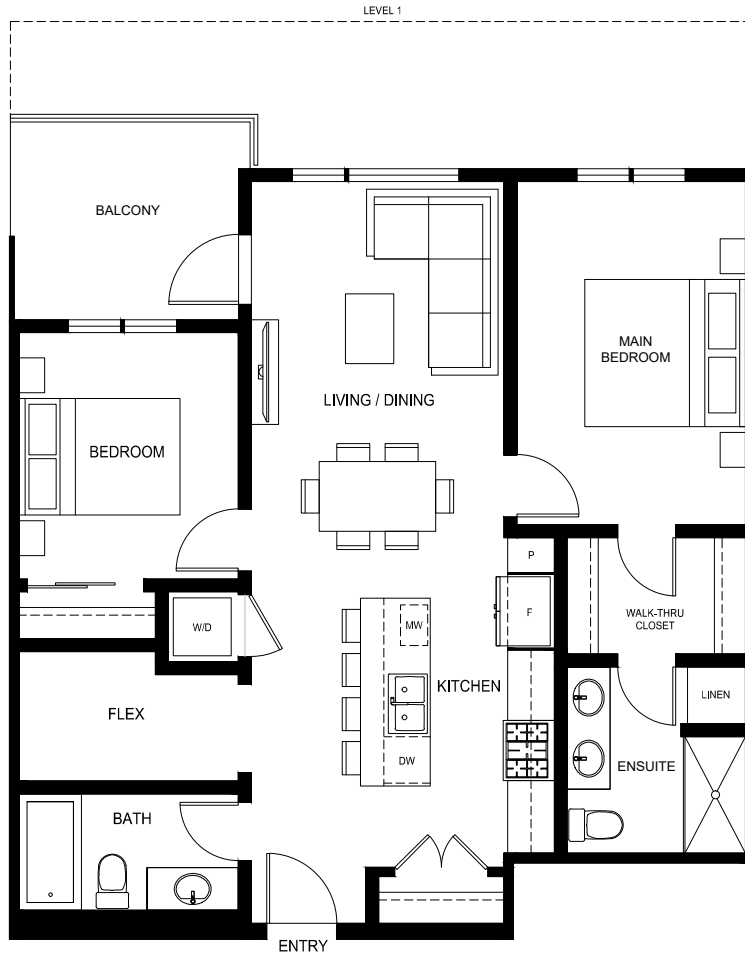
**SOUTH VILLAGE CONDOS**  
AT LATIMER HEIGHTS

**PLAN D**

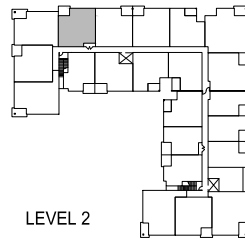
956 SQ.FT.

2 BED + FLEX | 2 BATH

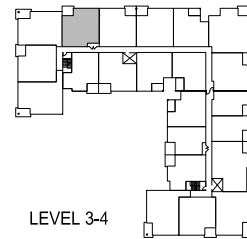
**TWO BEDROOM**



LEVEL 1



LEVEL 2



LEVEL 3-4





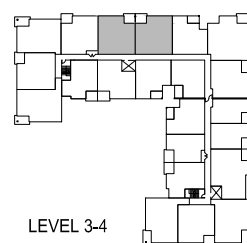
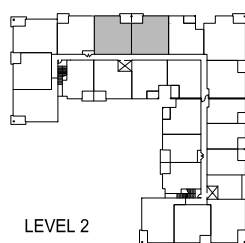
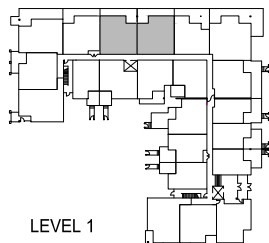
**SOUTH VILLAGE CONDOS**  
AT LATIMER HEIGHTS

**PLAN D1**

986 SQ.FT.

2 BED + FLEX | 2 BATH

**TWO BEDROOM**





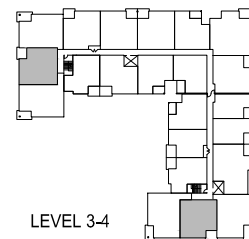
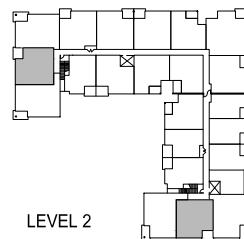
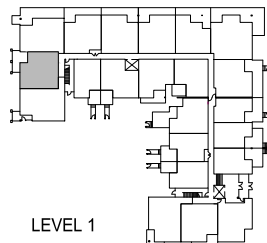
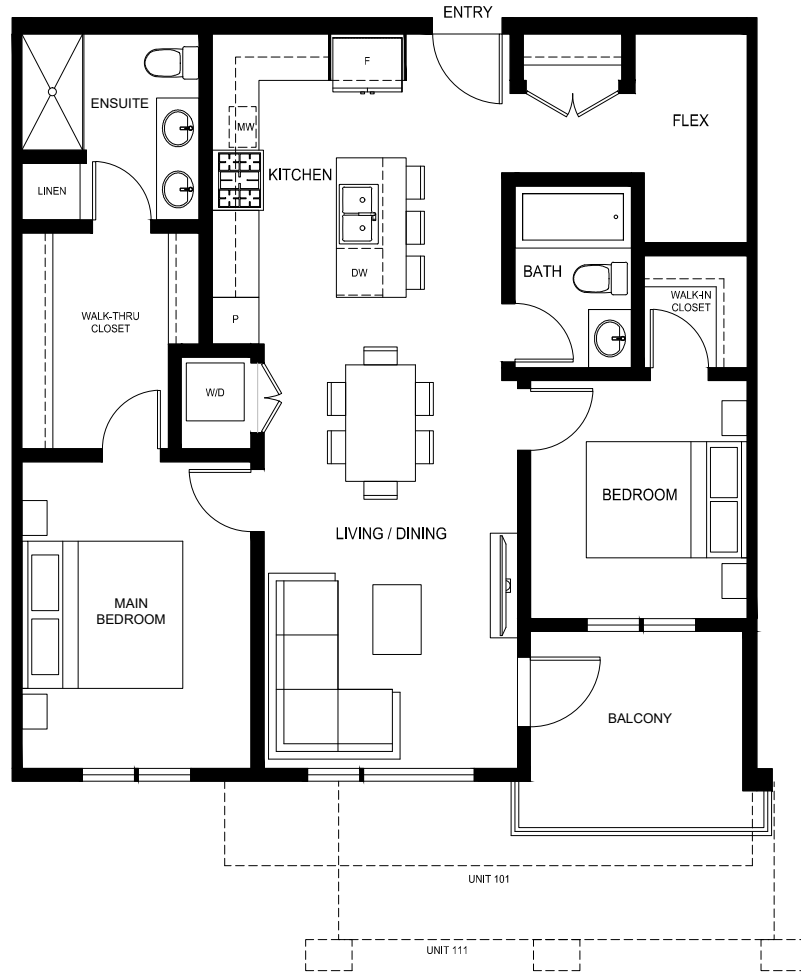
# SOUTH VILLAGE CONDOS AT LATIMER HEIGHTS

## PLAN D1-alt

977 SQ.FT.

2 BED + FLEX | 2 BATH

TWO BEDROOM

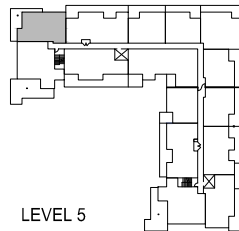
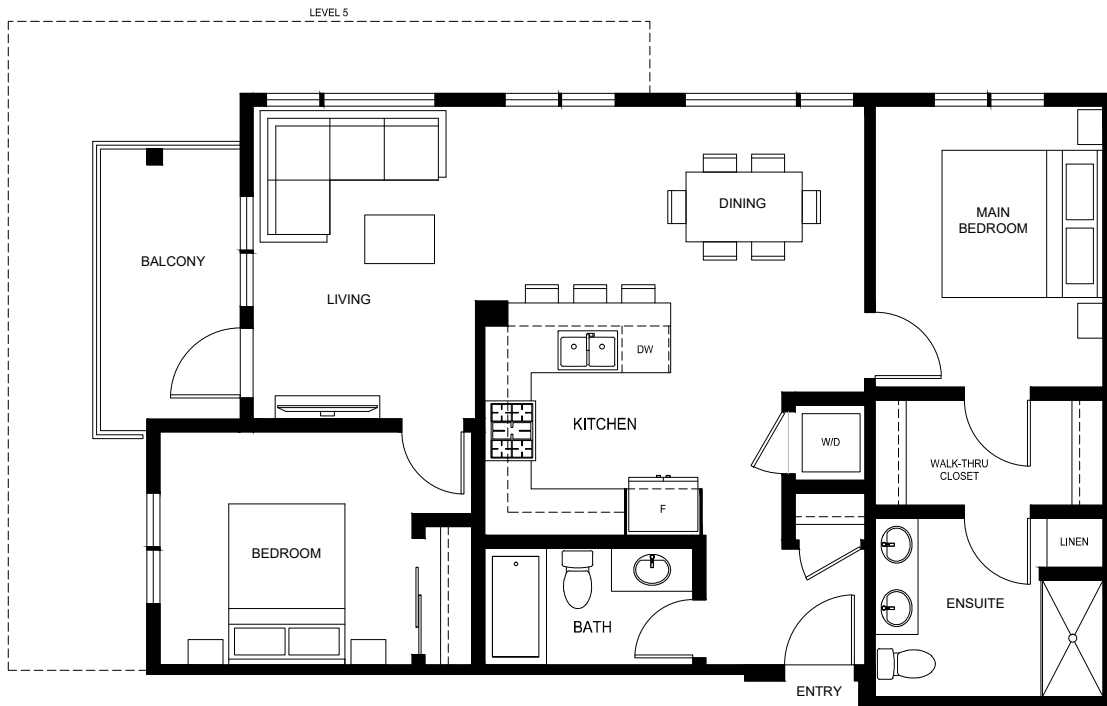




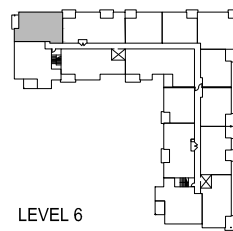
**SOUTH VILLAGE CONDOS**  
AT LATIMER HEIGHTS

**PLAN D2a**  
994 SQ.FT.  
2 BED | 2 BATH

**TWO BEDROOM**



LEVEL 5



LEVEL 6







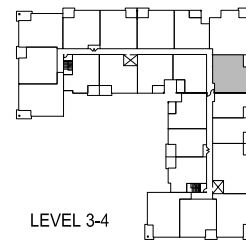
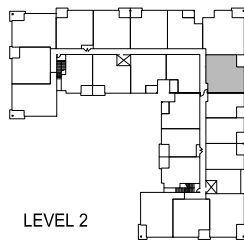
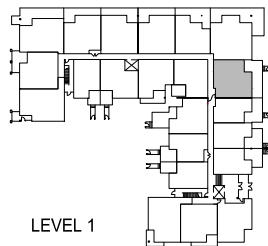
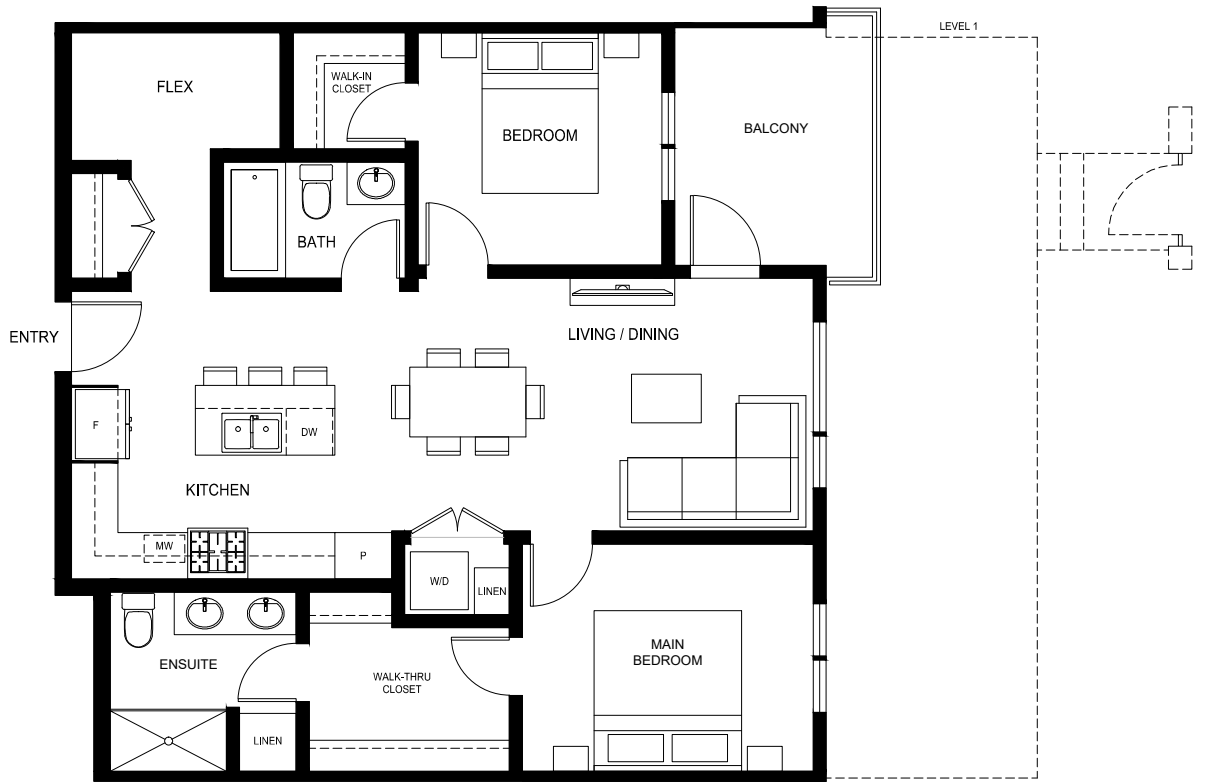
**SOUTH VILLAGE CONDOS**  
AT LATIMER HEIGHTS

**PLAN D4**

986 SQ.FT.

2 BED + FLEX | 2 BATH

**TWO BEDROOM**





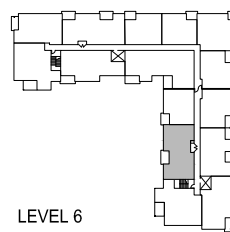
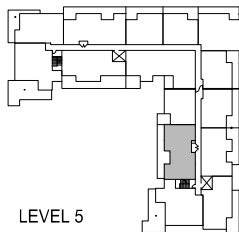
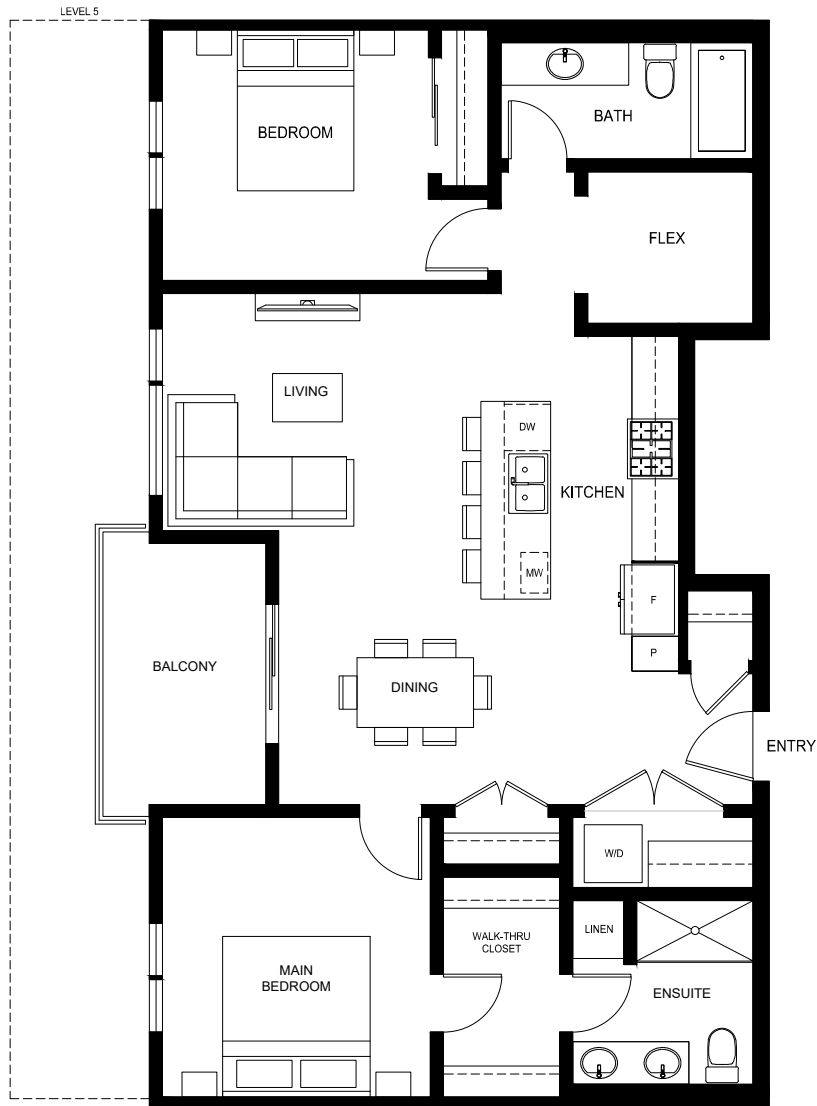
**SOUTH VILLAGE CONDOS**  
AT LATIMER HEIGHTS

**PLAN D5**

1,137 SQ.FT.

2 BED + FLEX | 2 BATH

**TWO BEDROOM**





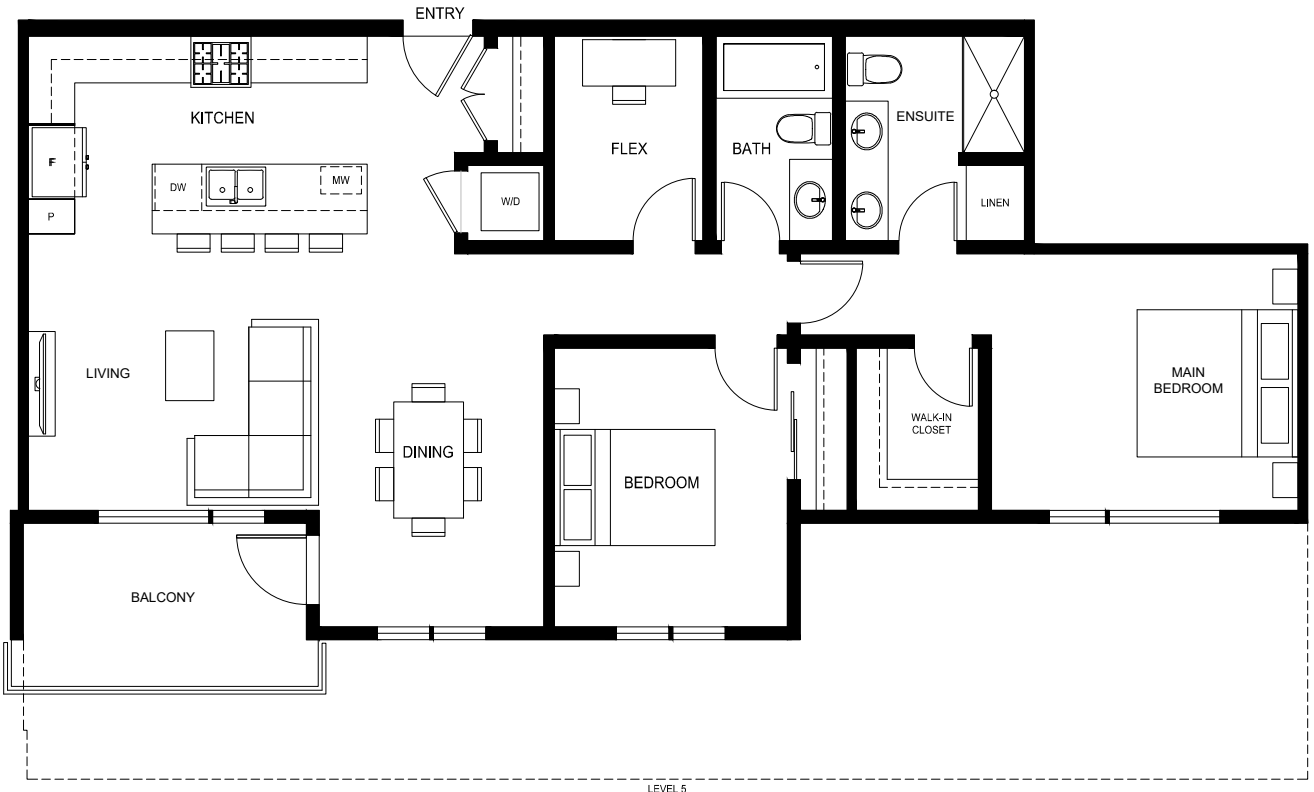
**SOUTH VILLAGE CONDOS**  
AT LATIMER HEIGHTS

**PLAN D6**

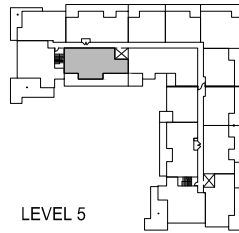
1,179 SQ.FT.

2 BED + FLEX | 2 BATH

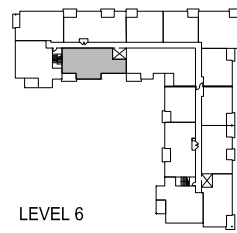
**TWO BEDROOM**



LEVEL 5



LEVEL 5



LEVEL 6

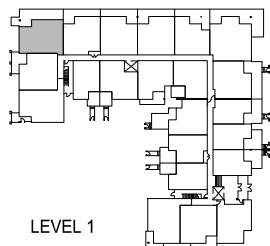
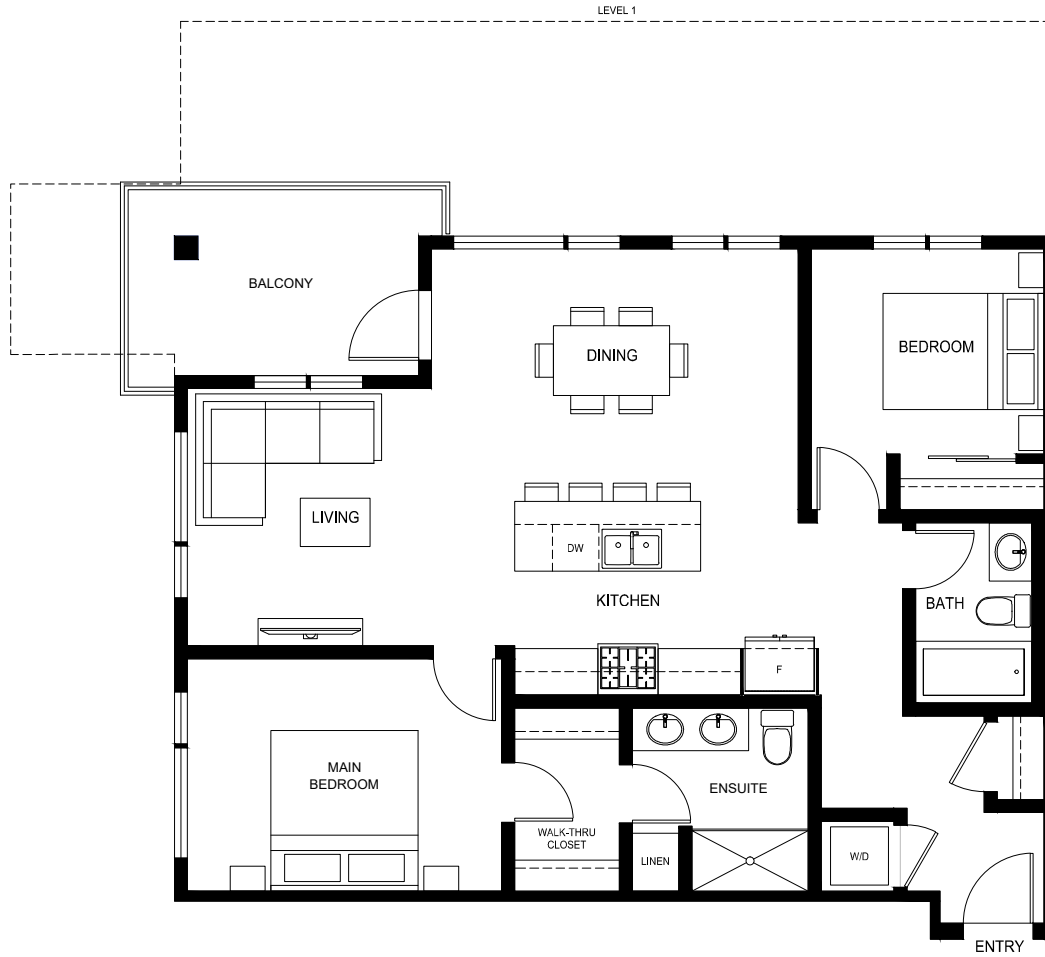




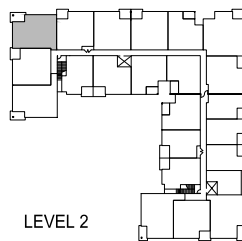
**SOUTH VILLAGE CONDOS**  
AT LATIMER HEIGHTS

**PLAN D7**  
1,020 SQ.FT.  
2 BED | 2 BATH

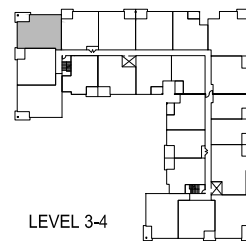
**TWO BEDROOM**



LEVEL 1



LEVEL 2



LEVEL 3-4





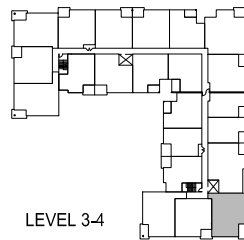
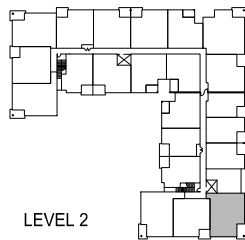
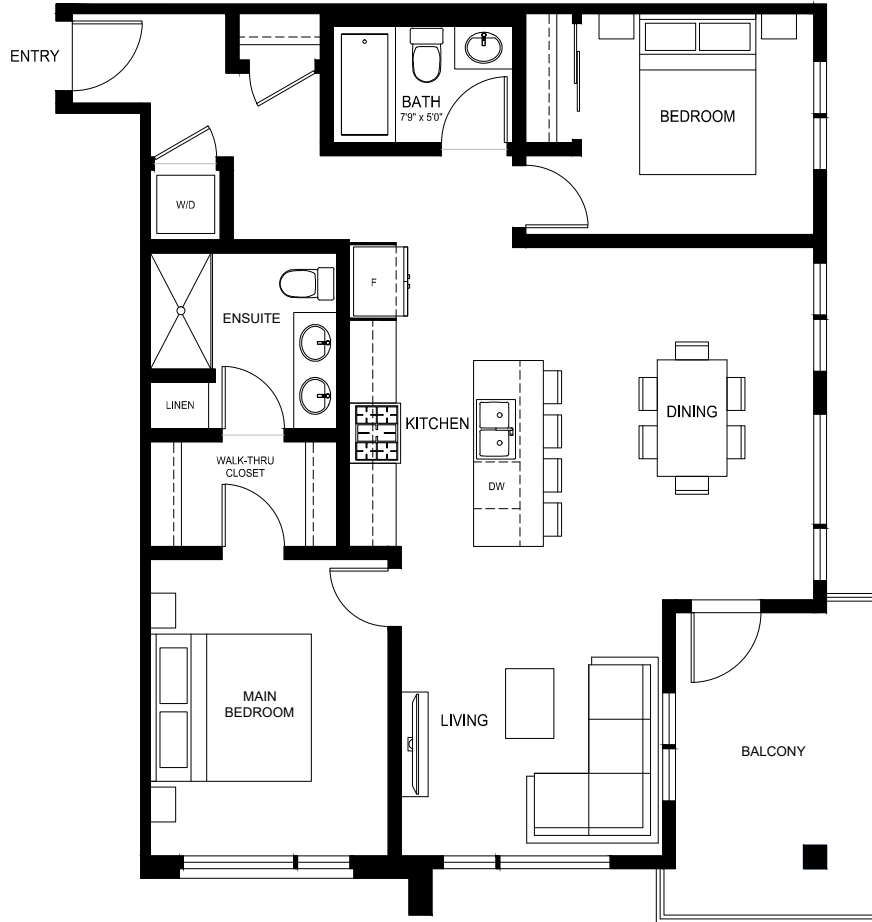
**SOUTH VILLAGE CONDOS**  
AT LATIMER HEIGHTS

**PLAN D7-alt**

1,014 SQ.FT.

2 BED | 2 BATH

**TWO BEDROOM**

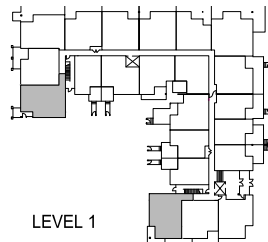
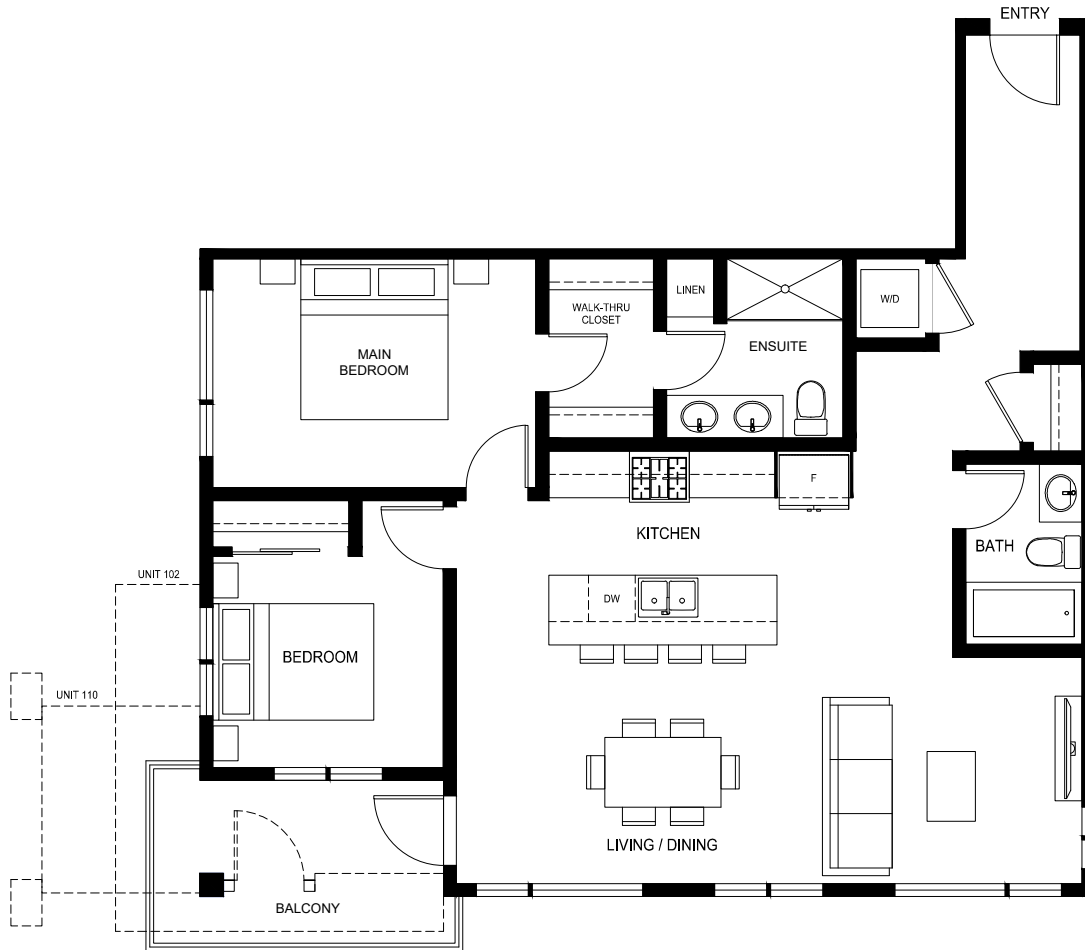




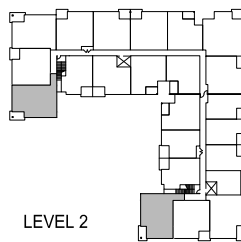
**SOUTH VILLAGE CONDOS**  
AT LATIMER HEIGHTS

**PLAN D8**  
1,071 SQ.FT.  
2 BED | 2 BATH

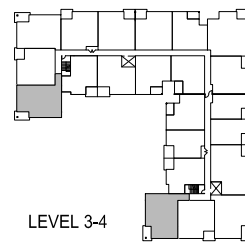
**TWO BEDROOM**



LEVEL 1



LEVEL 2



LEVEL 3-4





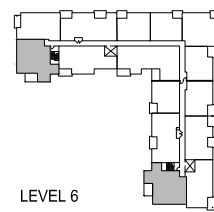
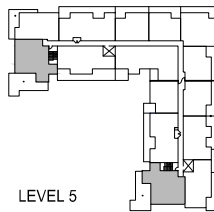
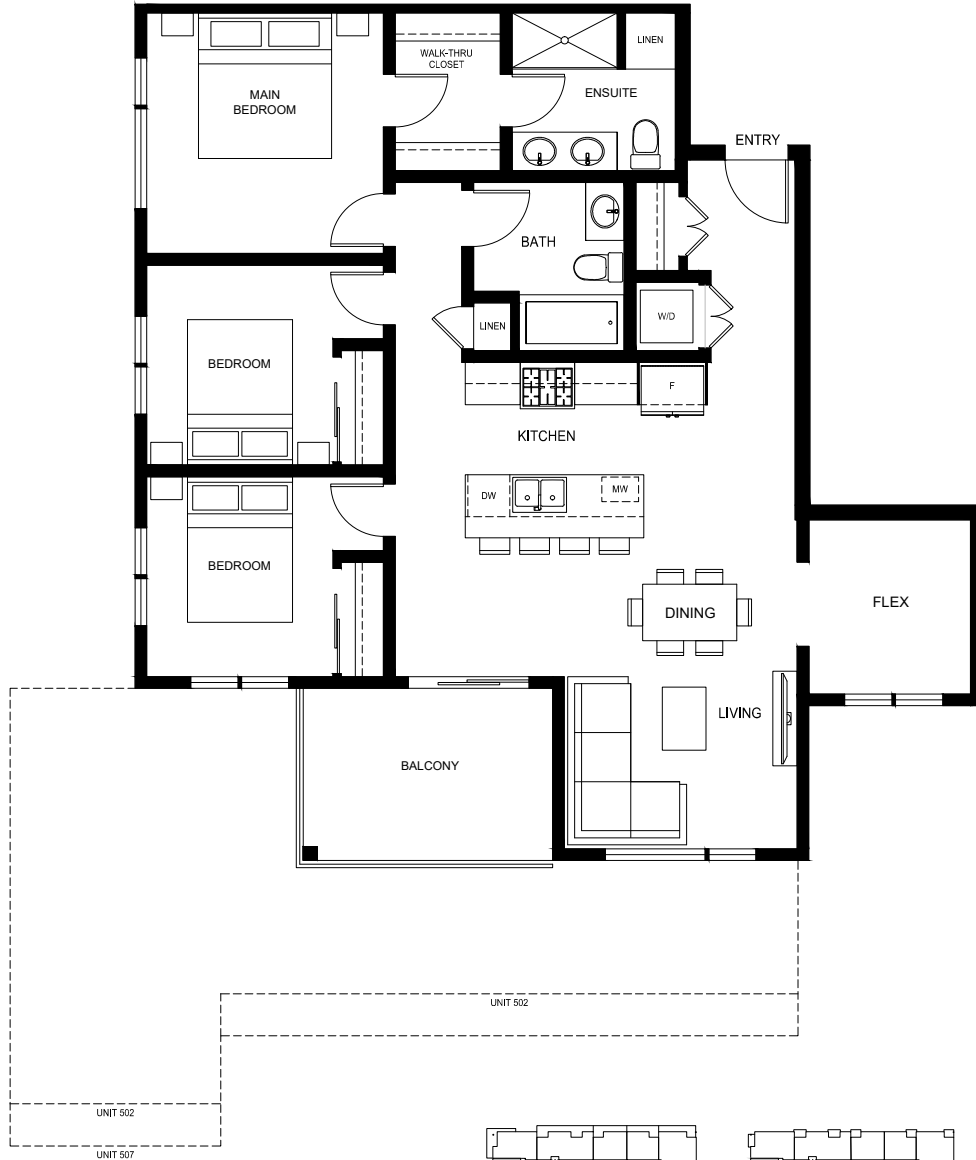
# SOUTH VILLAGE CONDOS AT LATIMER HEIGHTS

## PLAN F1

1,058 SQ.FT.

3 BED + FLEX | 2 BATH

THREE BEDROOM

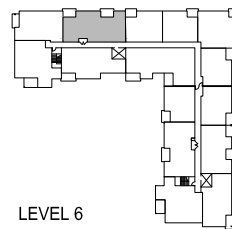
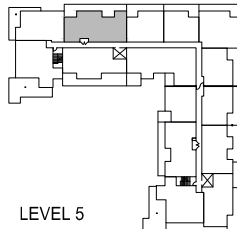
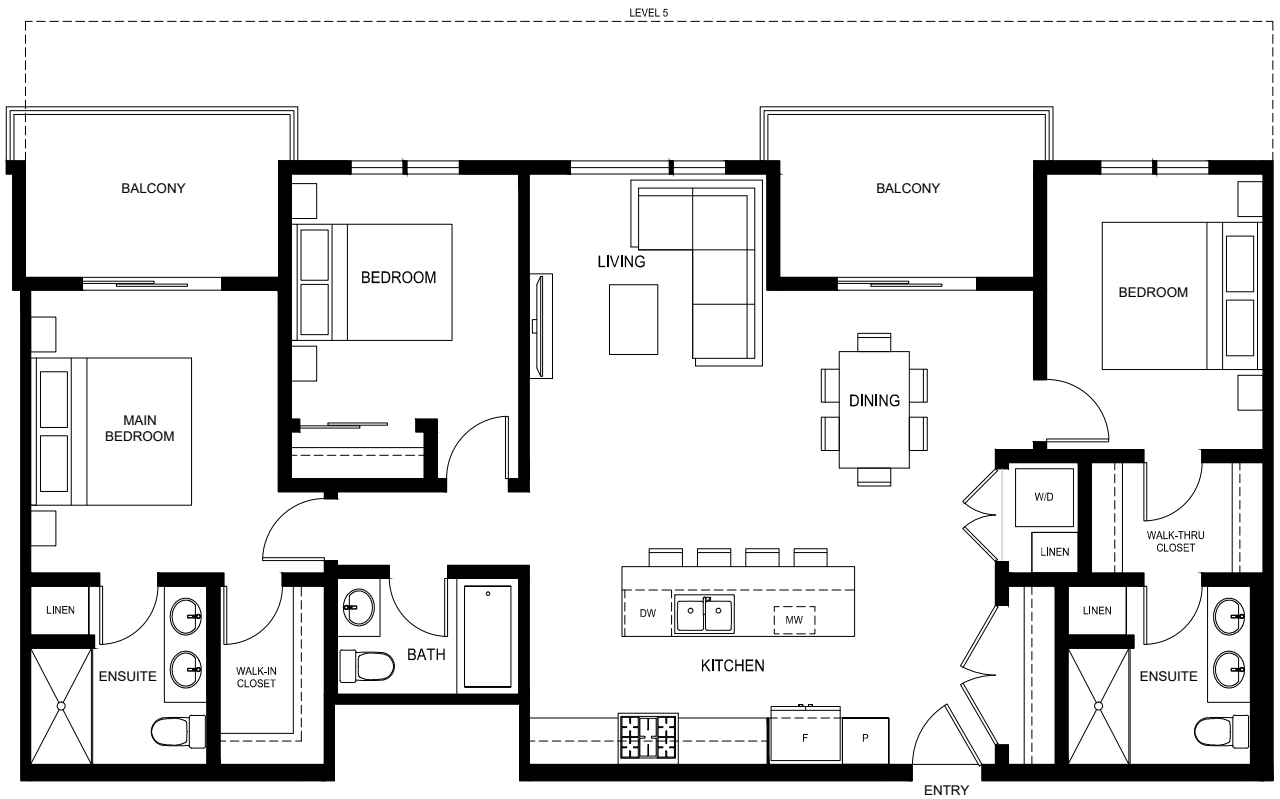




**SOUTH VILLAGE CONDOS**  
AT LATIMER HEIGHTS

**PLAN F2a**  
1,280 SQ.FT.  
3 BED | 3 BATH

THREE BEDROOM



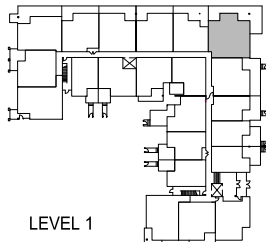
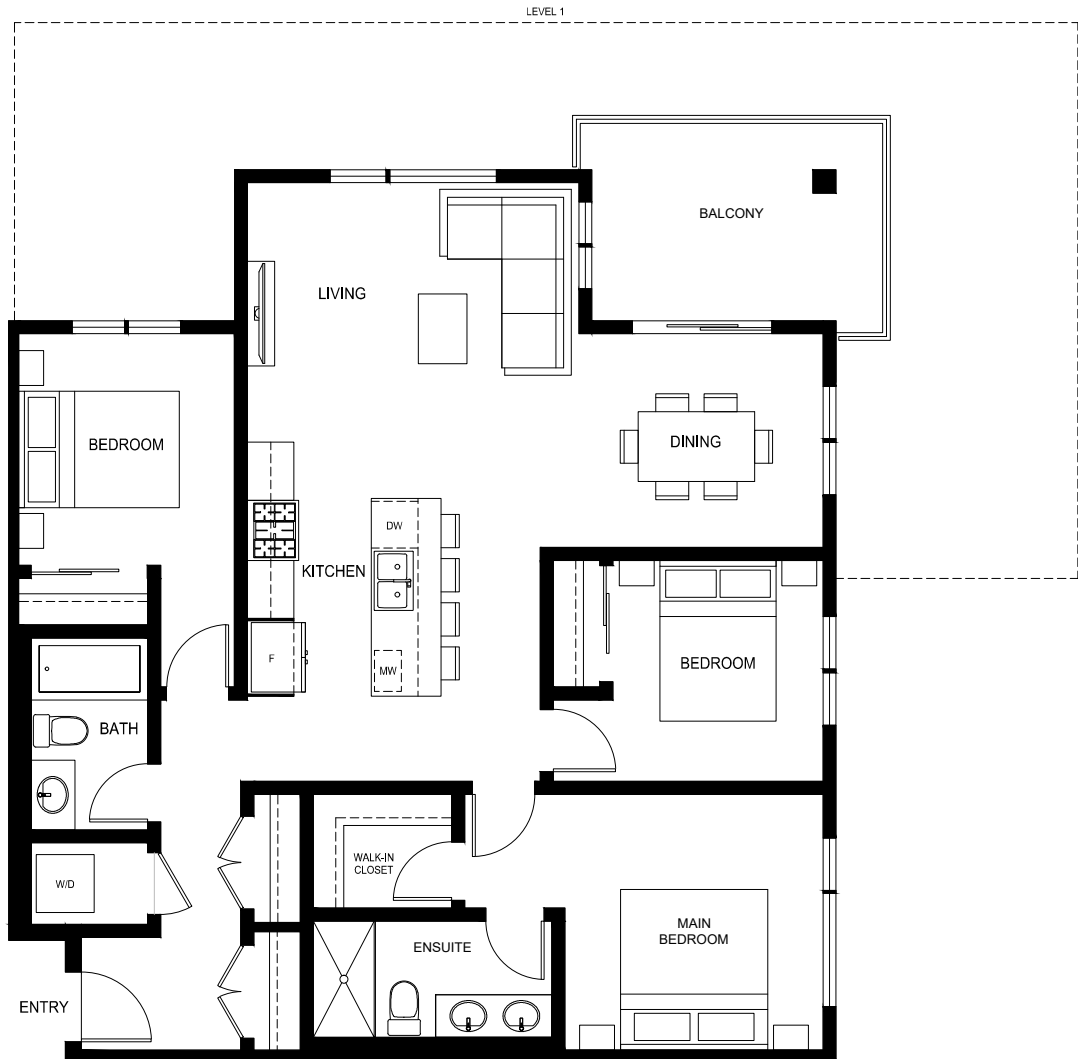




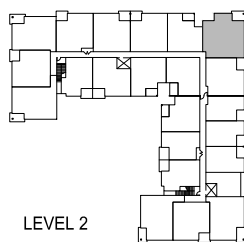
**SOUTH VILLAGE CONDOS**  
AT LATIMER HEIGHTS

**PLAN F3**  
1,213 SQ.FT.  
3 BED | 2 BATH

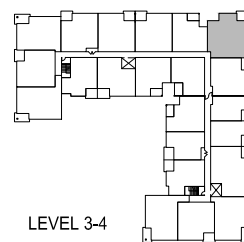
THREE BEDROOM



LEVEL 1



LEVEL 2



LEVEL 3-4

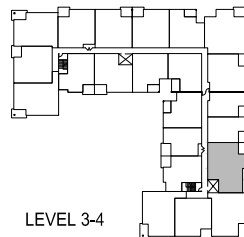
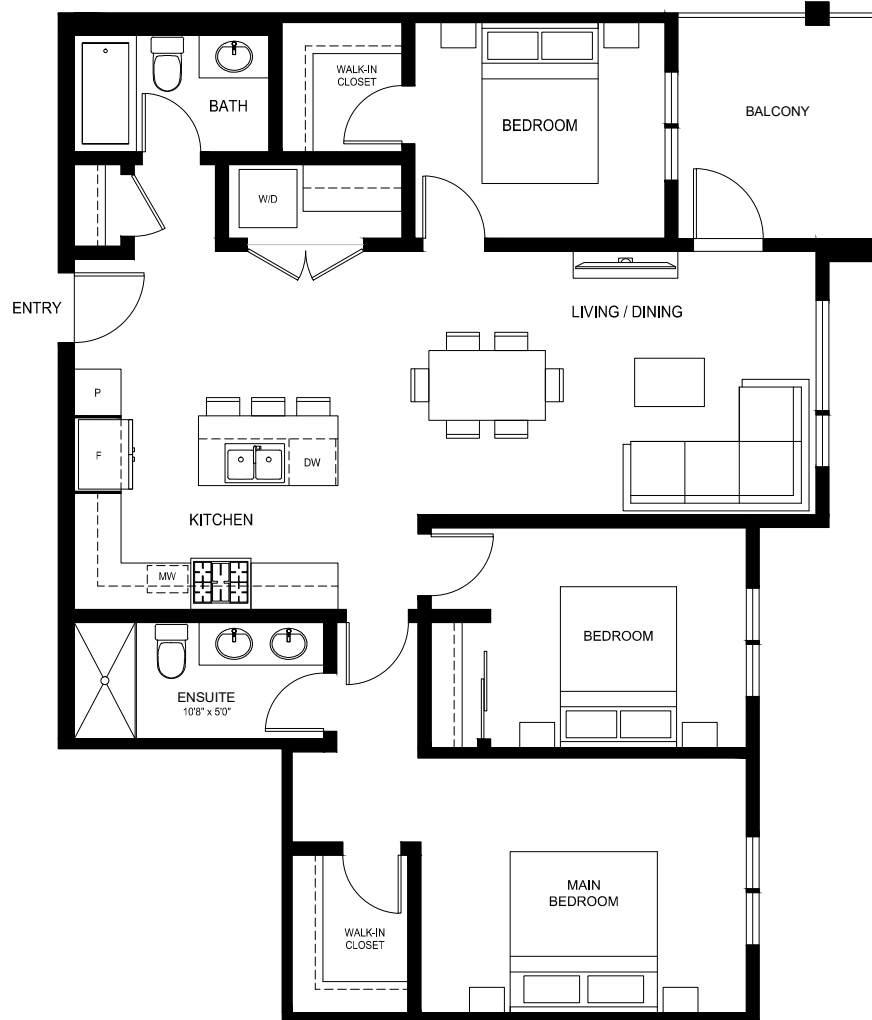




**SOUTH VILLAGE CONDOS**  
AT LATIMER HEIGHTS

**PLAN F4**  
1,175 SQ.FT.  
3 BED | 2 BATH

THREE BEDROOM





**SOUTH VILLAGE CONDOS**  
AT LATIMER HEIGHTS

**PLAN F6**

1,518 SQ.FT.

3 BED + DEN + FLEX | 2 BATH

**THREE BEDROOM**

