



FARMHOUSE



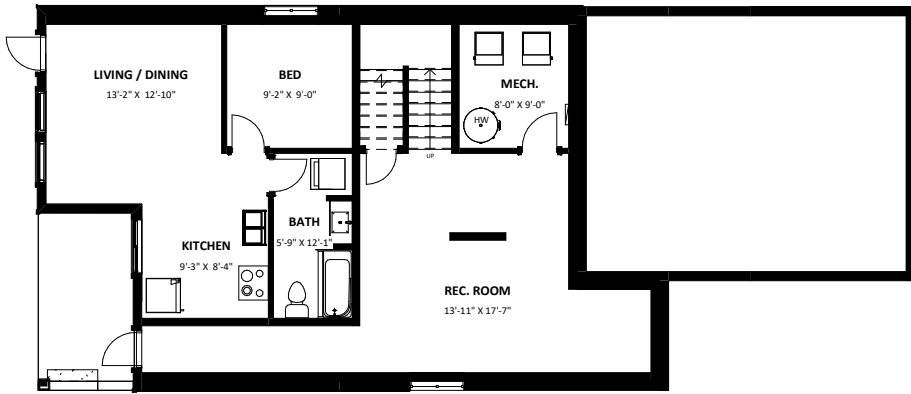
CRAFTSMAN

**THE HUDSON**  
LUXURY ESTATE SINGLE HOMES

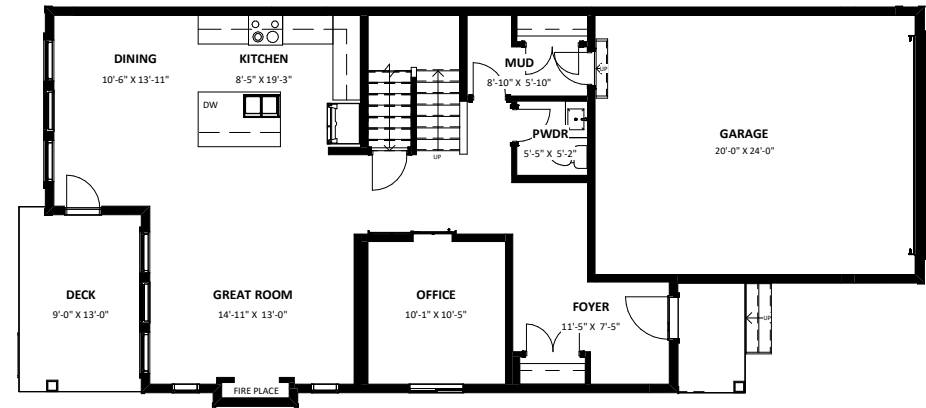
The developer reserves the absolute right to modify, cancel or extend this offer at any time without prior notice. Actual interiors, exteriors and views may be noticeably different than what is depicted in photographs. This is not an offering for sale. Any such offering may only be made with the applicable offer to purchase and agreement of sale and disclosure statement. Prices and availability are subject to change without notice. E. & O.E.

**VESTA**

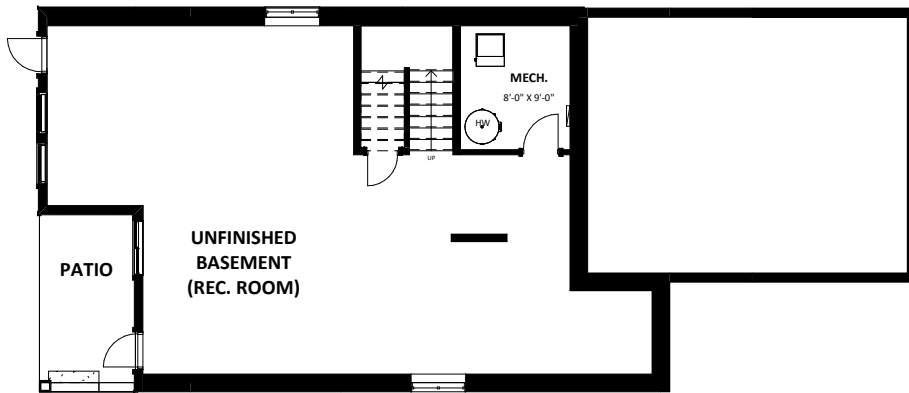
**COPPERSTONE**  
AT COPPERFIELD



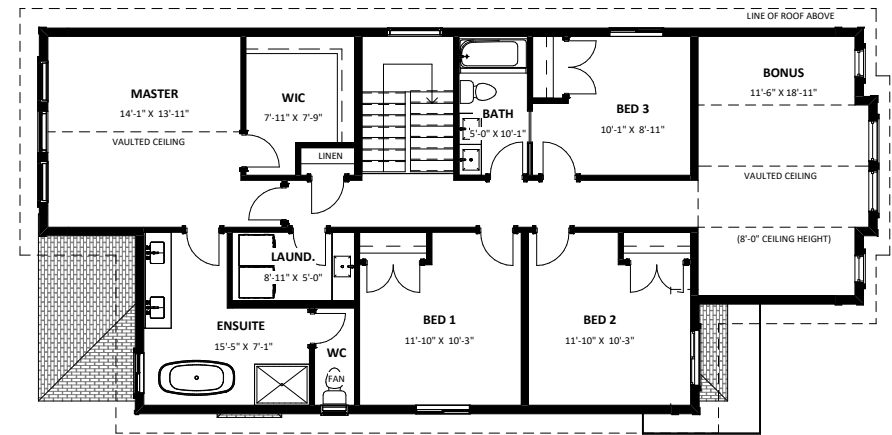
**BASEMENT SUITE** 478 SQ.FT. (OPTION)



**MAIN** 1,085 SQ.FT. **GARAGE** 477 SQ. FT.



**UNFINISHED BASEMENT** 1,082 SQ.FT.



**SECOND** 1,434 SQ.FT.

## THE HUDSON

4 BEDROOM + BONUS ROOM | 3 BATHROOM  
**2,519 SQ.FT.** UNFINISHED BASEMENT 1,082 SQ.FT.

The developer reserves the absolute right to modify, cancel or extend this offer at any time without prior notice. Actual interiors, exteriors and views may be noticeably different than what is depicted in photographs. This is not an offering for sale. Any such offering may only be made with the applicable offer to purchase and agreement of sale and disclosure statement. Prices and availability are subject to change without notice. E. & O.E.

**VESTA**

**COPPERSTONE**  
 AT COPPERFIELD