

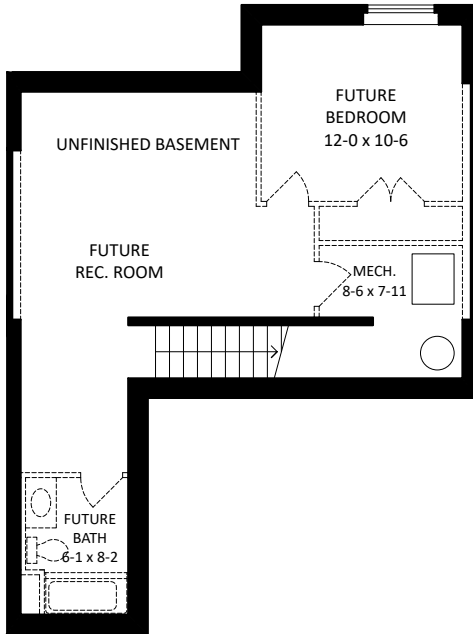
BRIMSTONE

TOWNHOMES AT COOPER'S CROSSING

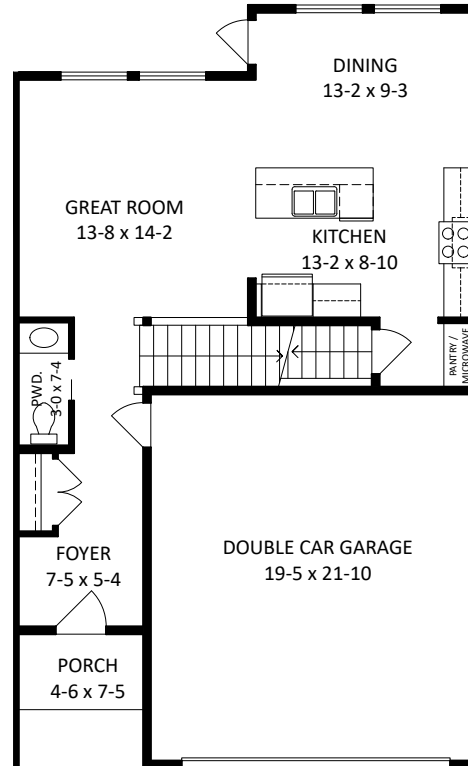
THE CELESTE (C3)

1,846 SQ.FT. + 718 SQ.FT. UNFINISHED BASEMENT

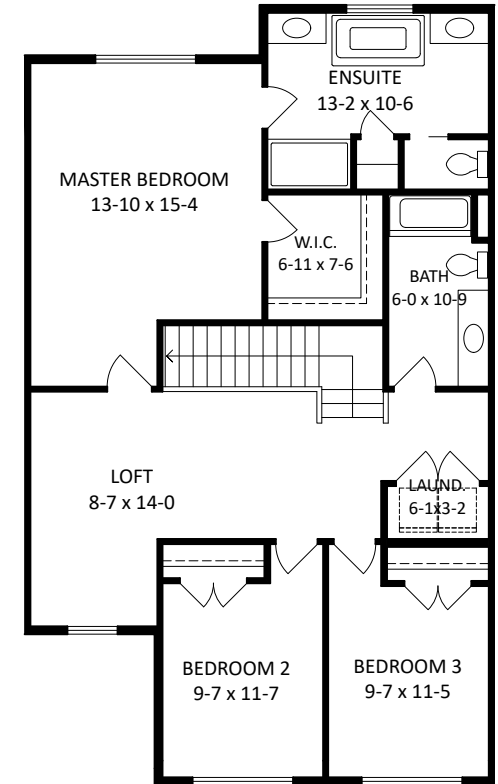
3 BEDROOM + LOFT | 2.5 BATH



Unfinished Basement 718 SQ.FT.



Main 711 SQ.FT.
Garage 445 SQ.FT.



Second 1,135 SQ.FT.