

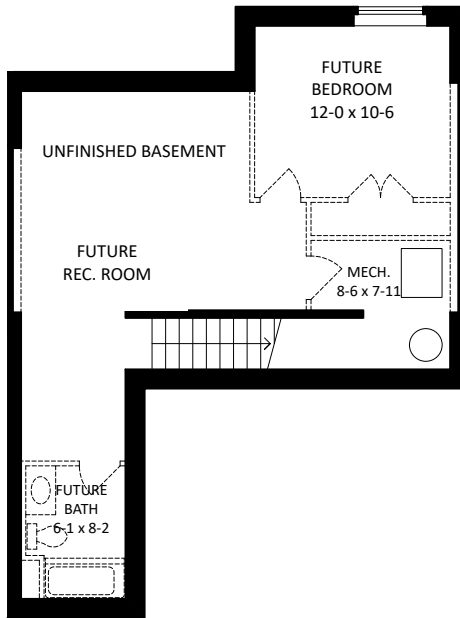
# BRIMSTONE

TOWNHOMES AT COOPER'S CROSSING

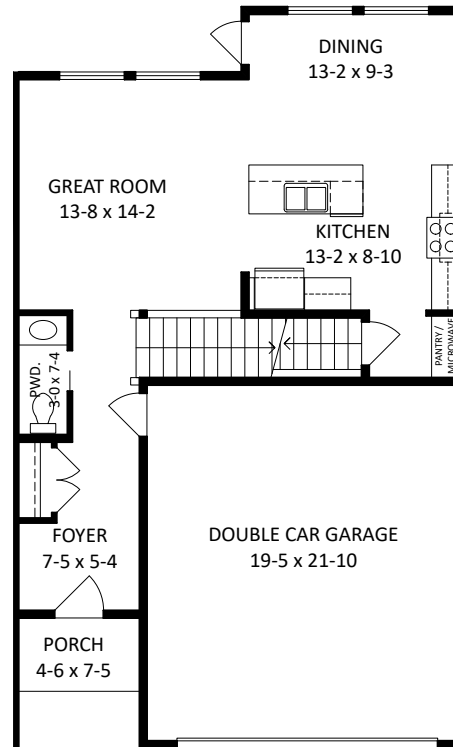
## THE CYNTHIA (C2)

1,836 SQ.FT. + 718 SQ.FT. UNFINISHED BASEMENT

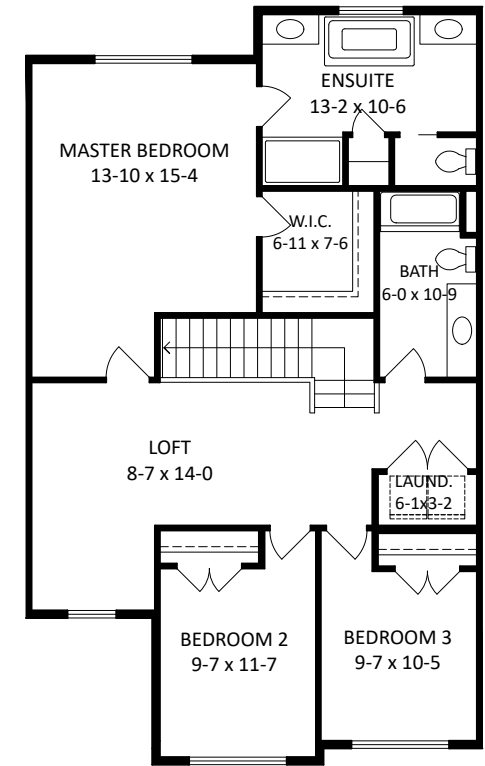
3 BEDROOM + LOFT | 2.5 BATH



Unfinished Basement 718 SQ.FT.



Main 711 SQ.FT.  
Garage 445 SQ.FT.



Second 1,125 SQ.FT.