



# SOUTH POINT

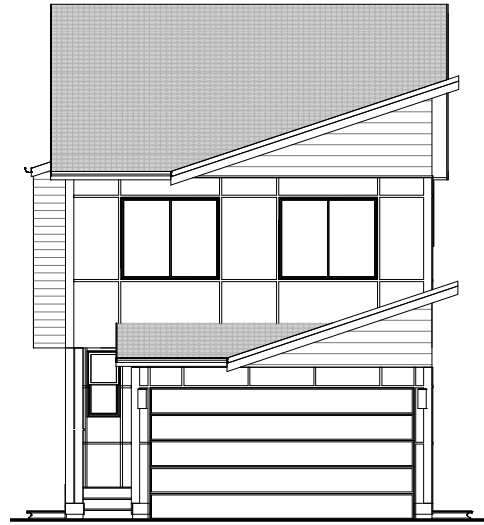
A MASTER PLANNED COMMUNITY

## THE WESTWOOD

2,015-2028 SQ.FT.



FARMHOUSE



MODERN



PRAIRIE



# SOUTH POINT

A MASTER PLANNED COMMUNITY

## THE WESTWOOD

2,015 SQ.FT.

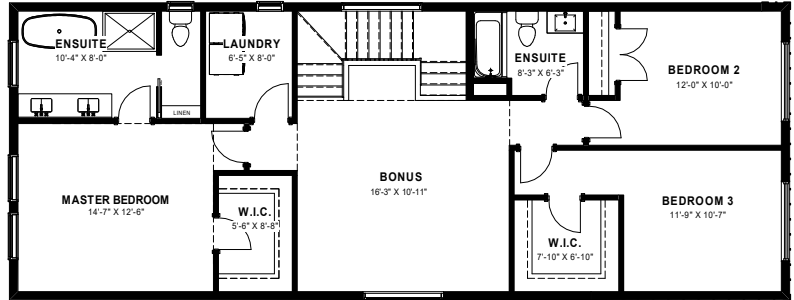
3 BEDROOM

+ OFFICE

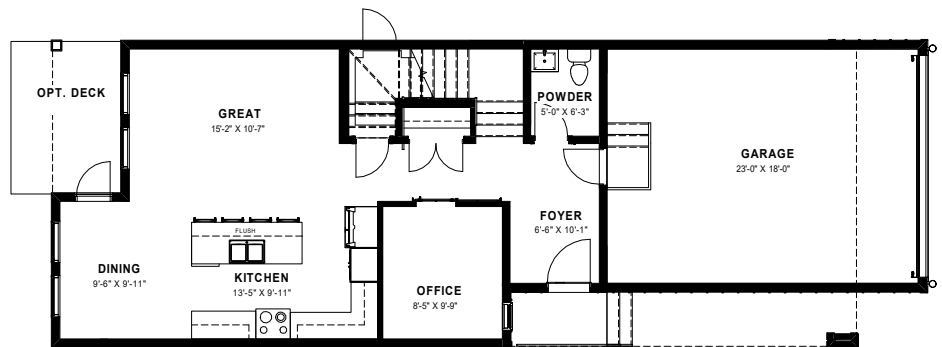
+ BONUS ROOM

3 BATHROOM

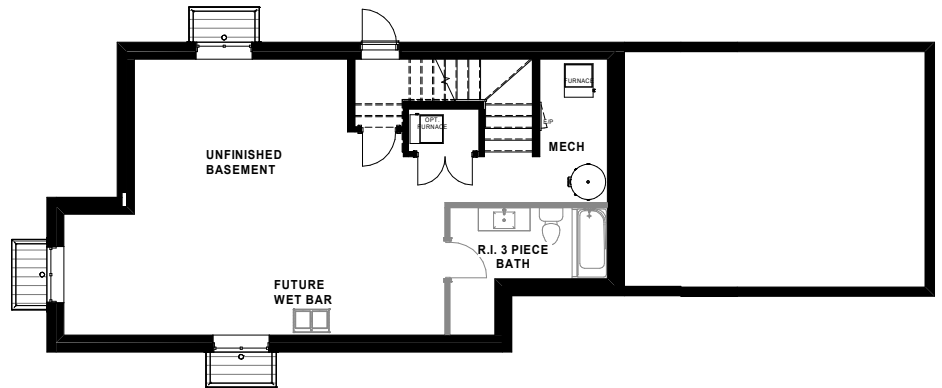
815 SQ.FT. UNFINISHED BASEMENT



SECOND 1,218 SQ.FT.



MAIN 797 SQ.FT. GARAGE 414 SQ. FT.



UNFINISHED BASEMENT 815 SQ.FT.