



SOUTH POINT

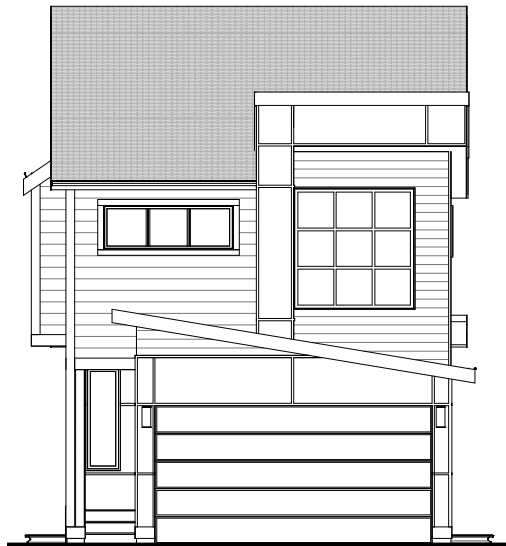
A MASTER PLANNED COMMUNITY

THE EASTWOOD

2,096 SQ.FT.



FARMHOUSE



MODERN



PRAIRIE

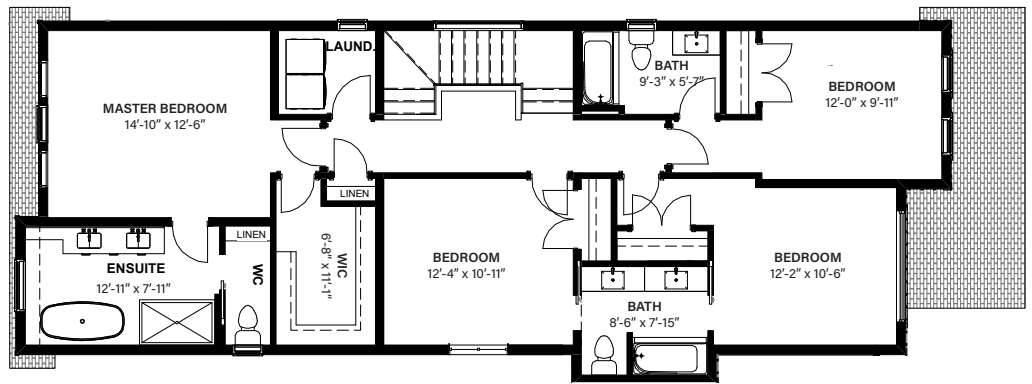


SOUTH POINT

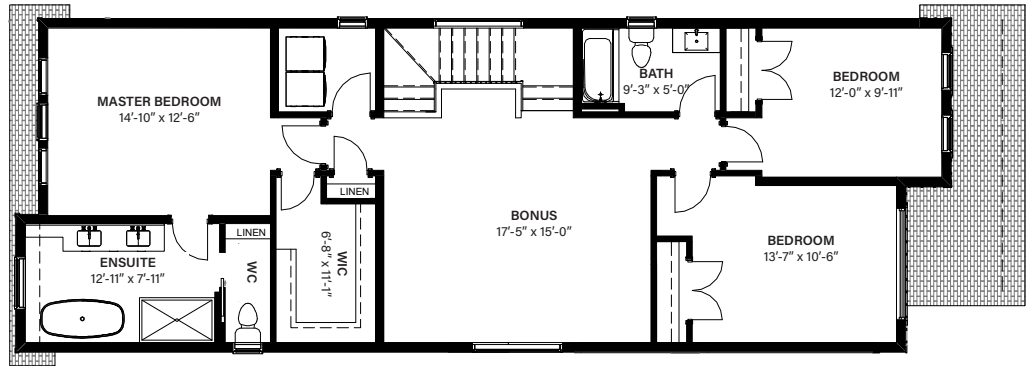
A MASTER PLANNED COMMUNITY

THE EASTWOOD

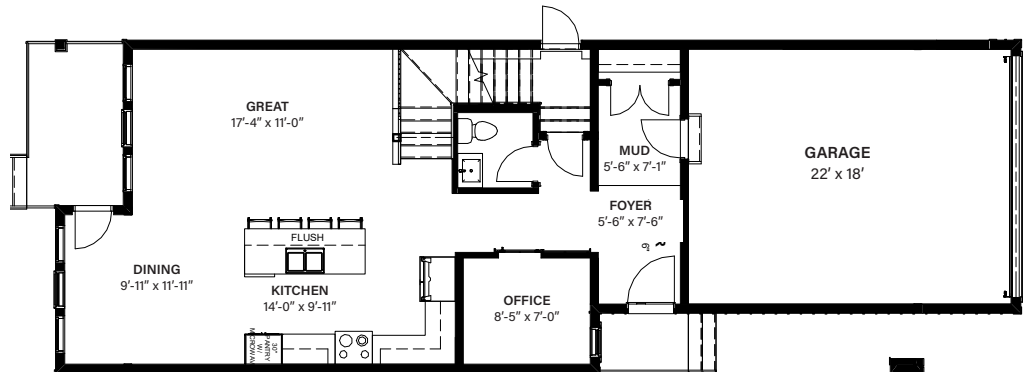
2,096 SQ.FT.
3 BEDROOM
+ OFFICE
+ BONUS ROOM
3 BATHROOM
851 SQ.FT. UNFINISHED
BASEMENT



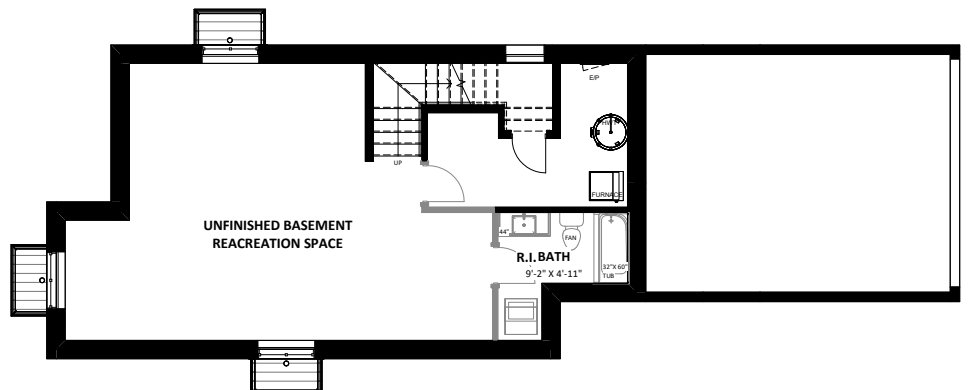
SECOND 1,245 SQ.FT. (4 BEDROOM OPTION)



SECOND 1,245 SQ.FT. (BONUS ROOM)



MAIN 851 SQ.FT.
GARAGE 396 SQ. FT.



UNFINISHED BASEMENT 851 SQ.FT.