



**SOUTH POINT**

A MASTER PLANNED COMMUNITY

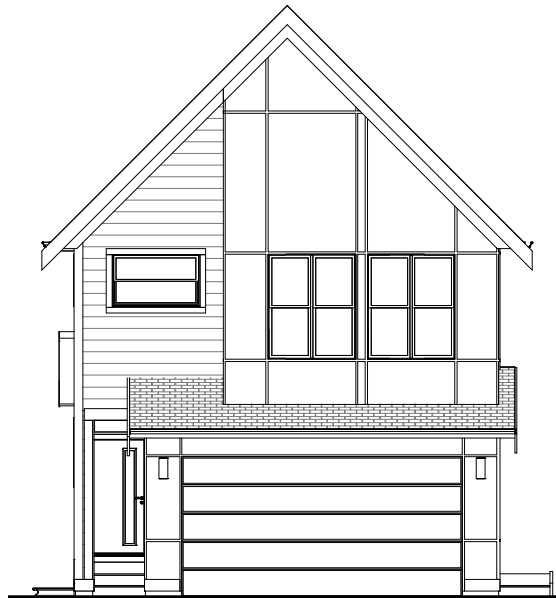
**THE BRADFORD**

2,344 SQ.FT.

**VESTASOUTHPOINT.COM**



**FARMHOUSE**



**MODERN**



**PRAIRIE**

The developer reserves the absolute right to modify, cancel or extend this offer at any time without prior notice. Actual interiors, exteriors and views may be noticeably different than what is depicted in photographs. This is not an offering for sale. Any such offering may only be made with the applicable offer to purchase and agreement of sale and disclosure statement. Prices and availability are subject to change without notice. E. & O.E.

**VESTA**



**SOUTH POINT**

A MASTER PLANNED COMMUNITY

## THE BRADFORD

2,344 SQ.FT.

3 BEDROOM

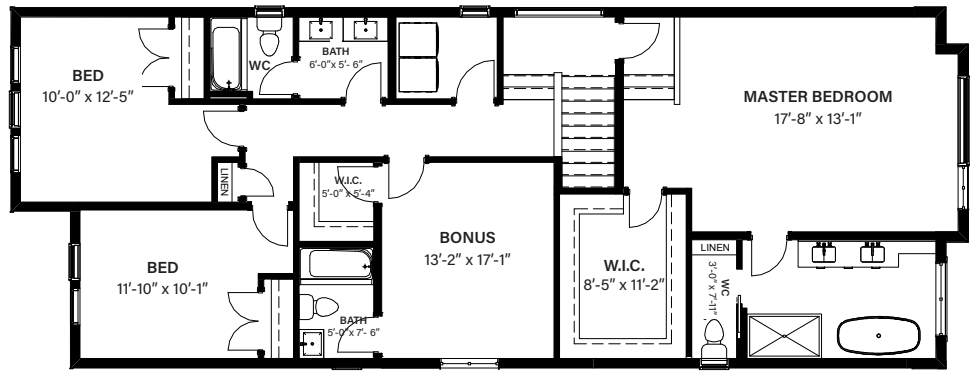
+ DEN

+ BONUS ROOM

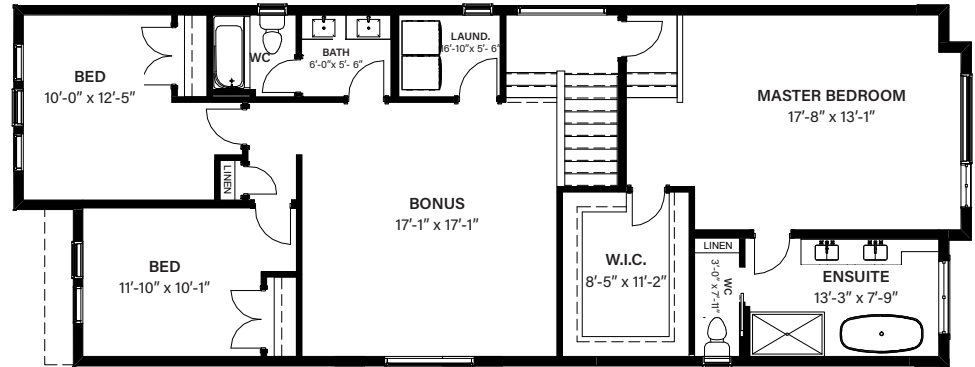
3 BATHROOM

963 SQ.FT. UNFINISHED

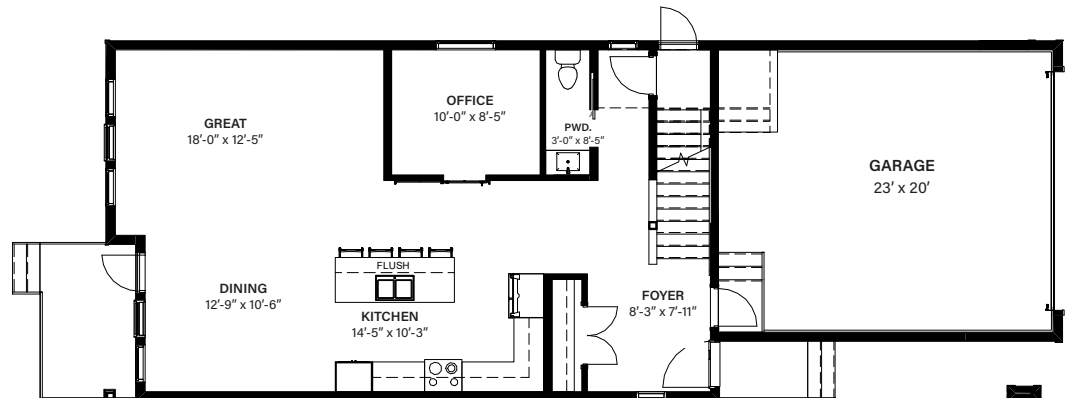
BASEMENT



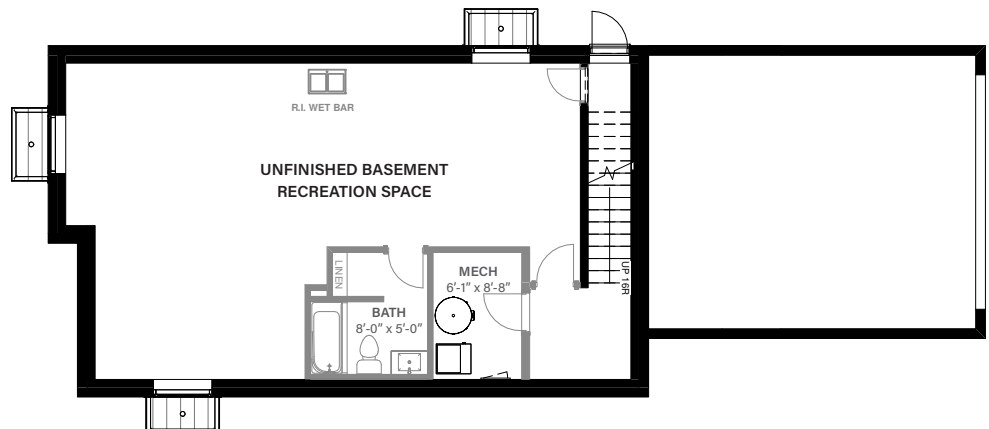
**SECOND 1,381 SQ.FT. (4 BEDROOM OPTION)**



**SECOND 1,381 SQ.FT. (BONUS ROOM)**



**MAIN 963 SQ.FT.**  
**GARAGE 460 SQ. FT.**



**UNFINISHED BASEMENT 963 SQ.FT.**