



FARMHOUSE



CRAFTSMAN

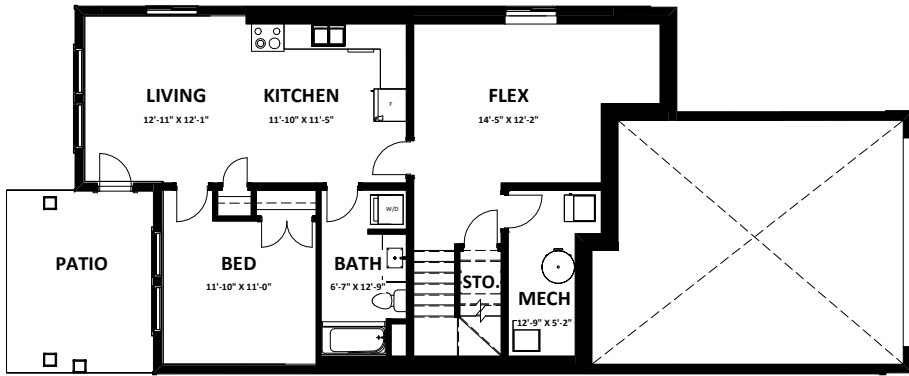
## THE PRESTIGE

LUXURY ESTATE SINGLE FAMILY HOMES

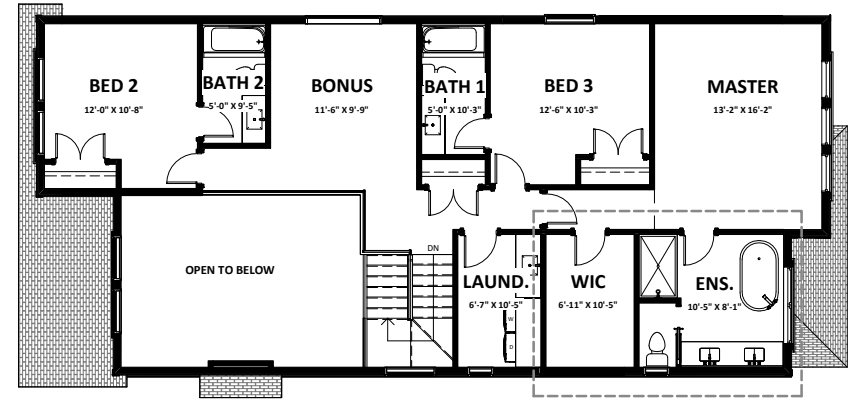
The developer reserves the absolute right to modify, cancel or extend this offer at any time without prior notice. Actual interiors, exteriors and views may be noticeably different than what is depicted in photographs. This is not an offering for sale. Any such offering may only be made with the applicable offer to purchase and agreement of sale and disclosure statement. Prices and availability are subject to change without notice. E. & O.E.

VESTA

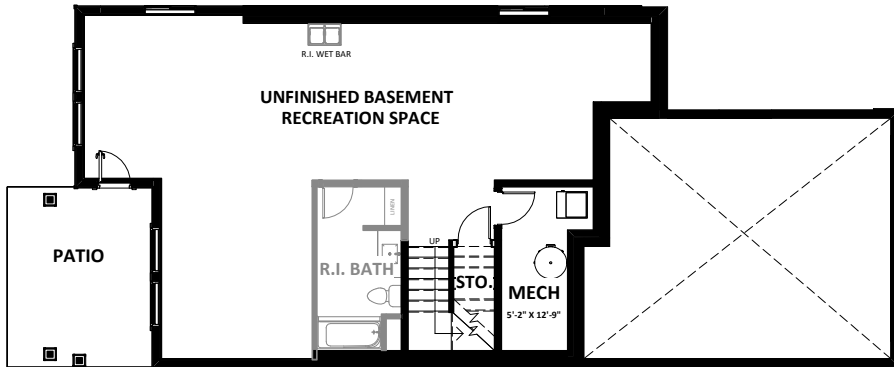
COPPERSTONE  
AT COPPERFIELD



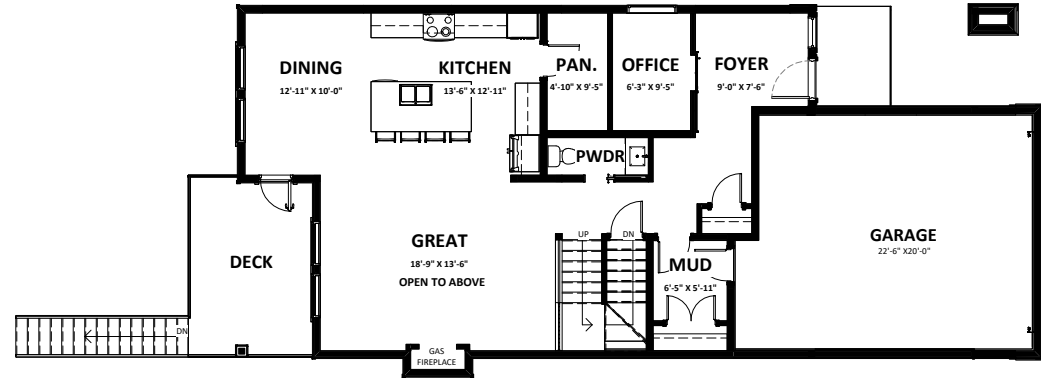
**BASEMENT SUITE 638 SQ.FT. (OPTION)**



**SECOND (OTB) 1,301 SQ.FT.**



**UNFINISHED BASEMENT 1,106 SQ.FT.**



**MAIN 1,106 SQ.FT. GARAGE 466 SQ. FT.**

## THE PRESTIGE

3 BEDROOM + OFFICE + BONUS ROOM | 3 BATHROOM  
**2,407 SQ.FT.** UNFINISHED BASEMENT 1,106 SQ.FT.

The developer reserves the absolute right to modify, cancel or extend this offer at any time without prior notice. Actual interiors, exteriors and views may be noticeably different than what is depicted in photographs. This is not an offering for sale. Any such offering may only be made with the applicable offer to purchase and agreement of sale and disclosure statement. Prices and availability are subject to change without notice. E. & O.E.

**VESTA**

**COPPERSTONE**  
 AT COPPERFIELD