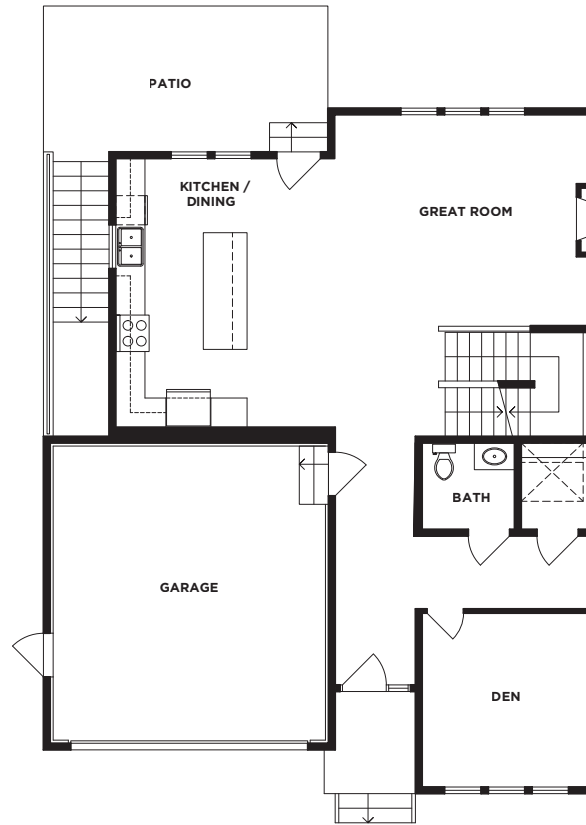
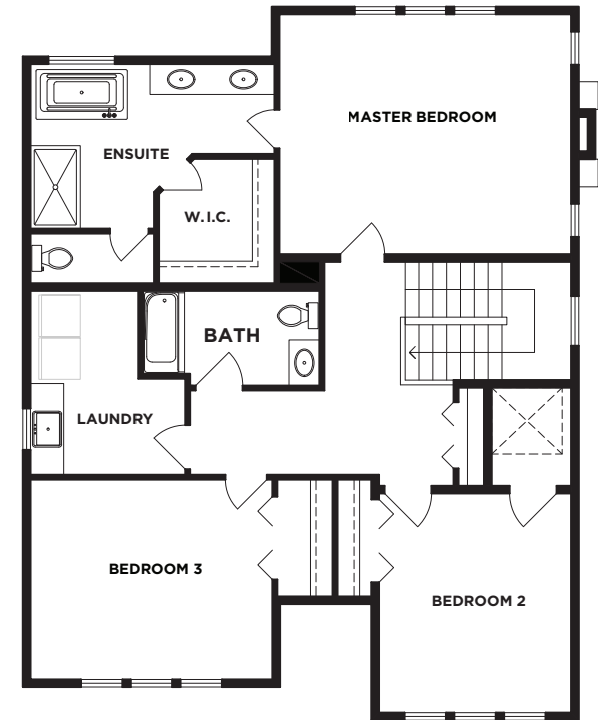


Unfinished Basement 1,126 SQ.FT.



Main 1,126 SQ.FT. Garage 415 SQ. FT.



Second 1,255 SQ.FT.

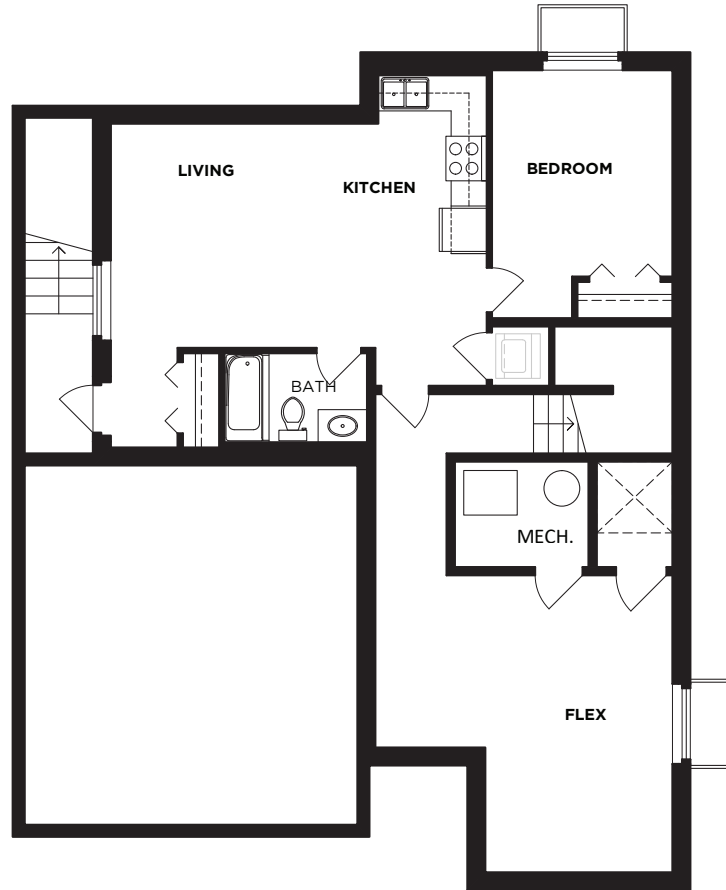
THE BRAMPTON

CLASSIC SINGLE FAMILY HOME | 3 BEDROOM + DEN | 2.5 BATHROOM
3,507 SQ.FT. INCLUDING 1,126 SQ.FT. UNFINISHED BASEMENT

In our continuing effort to improve and maintain the high standards of Latimer Heights, Vesta Properties (Latimer) Ltd. reserves the right to modify or change plans, specifications, features and prices without notice. Materials may be substituted with equivalent or better, at Vesta Properties (Latimer) Ltd. sole discretion. All dimensions and sizes are approximate and are based on preliminary survey measurements. As reverse plans occur throughout the development please see architectural plans. E&O.E.

VESTA
 PROPERTIES





Basement Suite 617 SQ.FT. (Optional)

THE BRAMPTON | BASEMENT SUITE OPTION

1 BEDROOM + FLEX | 1 BATHROOM

In our continuing effort to improve and maintain the high standards of Latimer Heights, Vesta Properties (Latimer) Ltd. reserves the right to modify or change plans, specifications, features and prices without notice. Materials may be substituted with equivalent or better, at Vesta Properties (Latimer) Ltd. sole discretion. All dimensions and sizes are approximate and are based on preliminary survey measurements. As reverse plans occur throughout the development please see architectural plans. E&O.E.

VESTA
PROPERTIES

