



Elevation 1



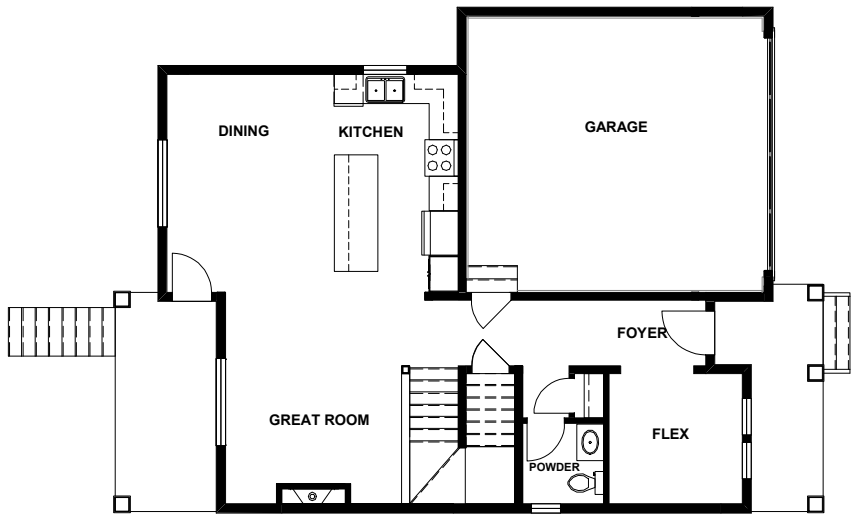
Elevation 2

## THE FRASER CLASSIC SINGLE FAMILY HOMES

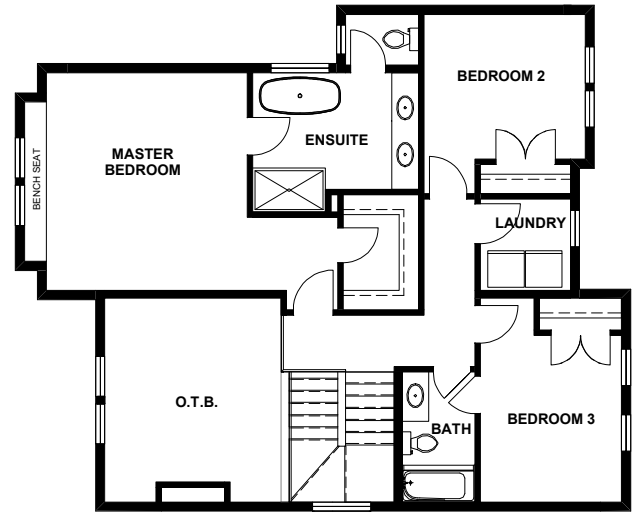
In our continuing effort to improve and maintain the high standards of Latimer Heights, Vesta Properties (Latimer) Ltd. reserves the right to modify or change plans, specifications, features and prices without notice. Materials may be substituted with equivalent or better, at Vesta Properties (Latimer) Ltd. sole discretion. All dimensions and sizes are approximate and are based on preliminary survey measurements. As reverse plans occur throughout the development please see architectural plans. E&O.E.

VESTA  
PROPERTIES

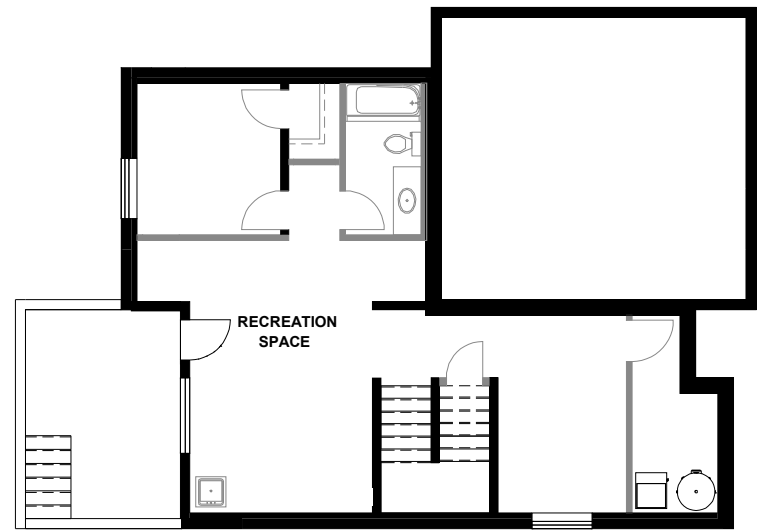




Main 864 SQ.FT. Garage 412 SQ.FT.



Second 961 SQ.FT.



Unfinished Basement 868 SQ.FT.

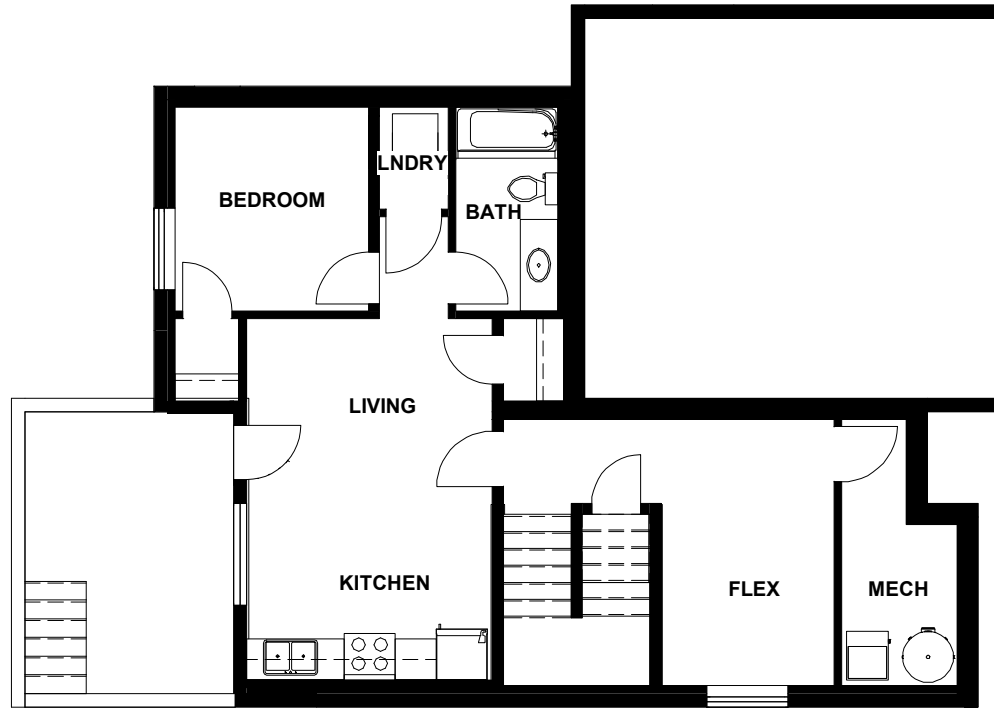
# THE FRASER

CLASSIC SINGLE FAMILY HOME | 3 BEDROOM + FLEX | 2.5 BATHROOM  
**2,693 SQ.FT. INCLUDING 868 SQ.FT. UNFINISHED BASEMENT**

In our continuing effort to improve and maintain the high standards of Latimer Heights, Vesta Properties (Latimer) Ltd. reserves the right to modify or change plans, specifications, features and prices without notice. Materials may be substituted with equivalent or better, at Vesta Properties (Latimer) Ltd. sole discretion. All dimensions and sizes are approximate and are based on preliminary survey measurements. As reverse plans occur throughout the development please see architectural plans. E&O.E.

VESTA  
 PROPERTIES





Basement Suite 520 SQ.FT.  
(Optional)

## THE FRASER | BASEMENT OPTIONS

1 BEDROOM + FLEX | 1 BATHROOM

In our continuing effort to improve and maintain the high standards of Latimer Heights, Vesta Properties (Latimer) Ltd. reserves the right to modify or change plans, specifications, features and prices without notice. Materials may be substituted with equivalent or better, at Vesta Properties (Latimer) Ltd. sole discretion. All dimensions and sizes are approximate and are based on preliminary survey measurements. As reverse plans occur throughout the development please see architectural plans. E&O.E.

VESTA  
PROPERTIES

