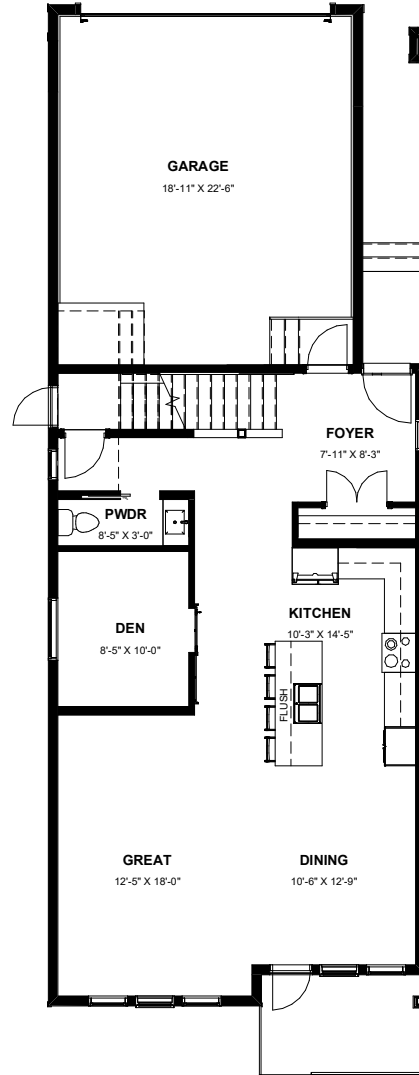
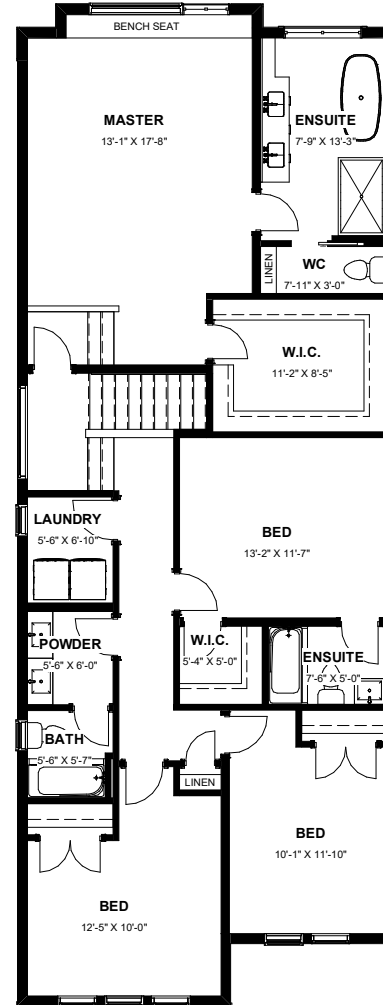


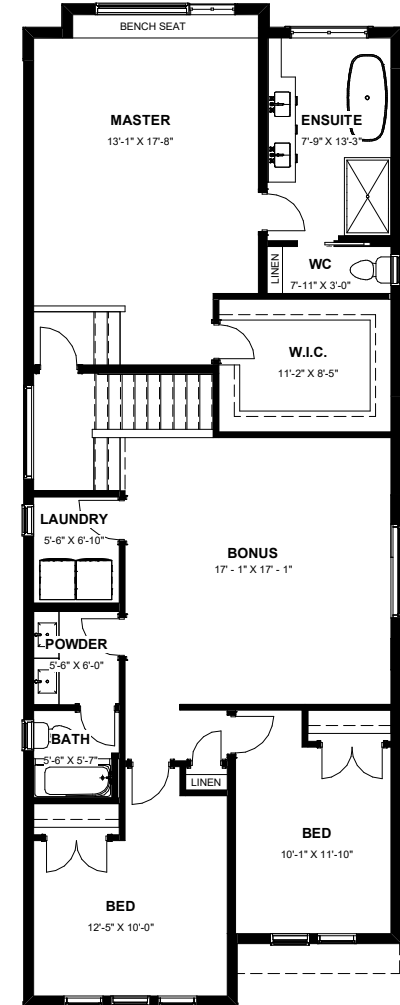
BASEMENT 963 SQ.FT. (UNFINISHED)
BASEMENT SUITE 851 SQ.FT. (OPTION)



MAIN 963 SQ.FT.
GARAGE 460 SQ. FT.



SECOND 1,381 SQ.FT.



SECOND 1,381 SQ.FT. (BONUS ROOM)

THE BRADFORD

4 BEDROOM | 3 BATHROOM

2,344 SQ.FT. UNFINISHED BASEMENT 963 SQ.FT.



The developer reserves the absolute right to modify, cancel or extend this offer at any time without prior notice. Actual interiors, exteriors and views may be noticeably different than what is depicted in photographs. This is not an offering for sale. Any such offering may only be made with the applicable offer to purchase and agreement of sale and disclosure statement. Prices and availability are subject to change without notice. E. & O.E.

