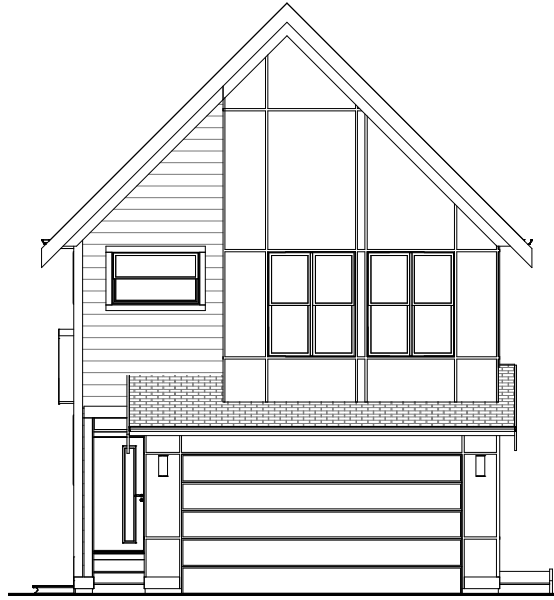




FARMHOUSE



MODERN



PRAIRIE

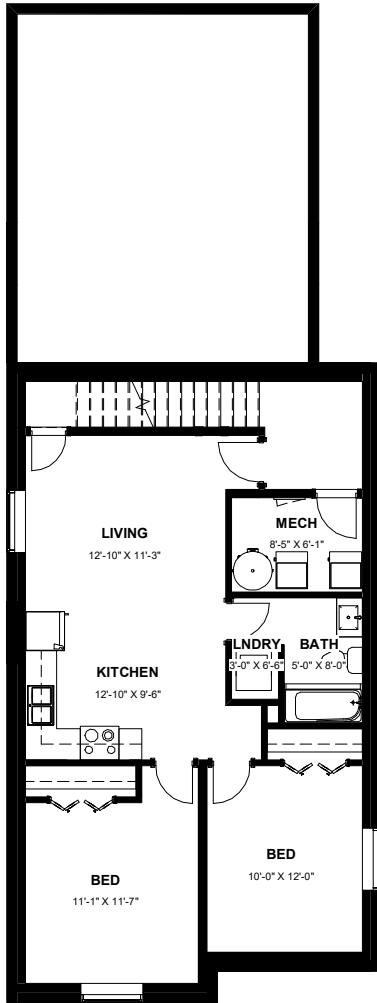
THE BRADFORD

MODERN SINGLE FAMILY HOMES

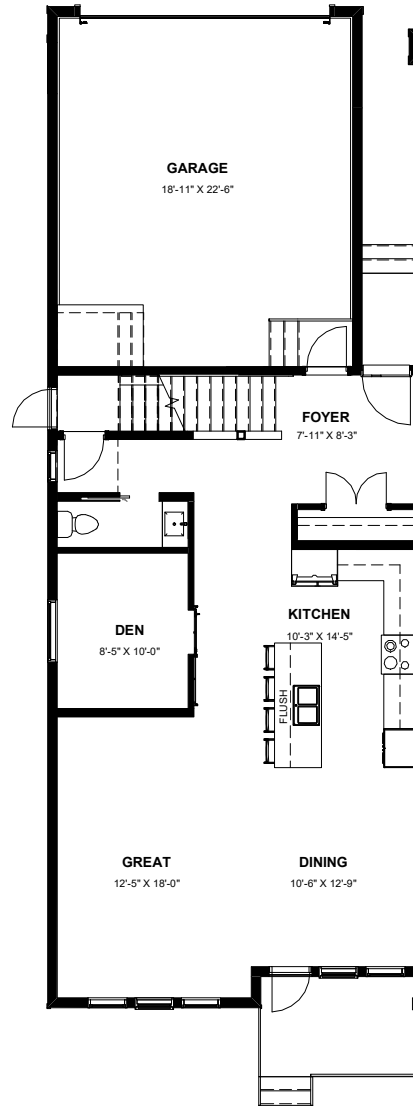
The developer reserves the absolute right to modify, cancel or extend this offer at any time without prior notice. Actual interiors, exteriors and views may be noticeably different than what is depicted in photographs. This is not an offering for sale. Any such offering may only be made with the applicable offer to purchase and agreement of sale and disclosure statement. Prices and availability are subject to change without notice. E. & O.E.

VESTA

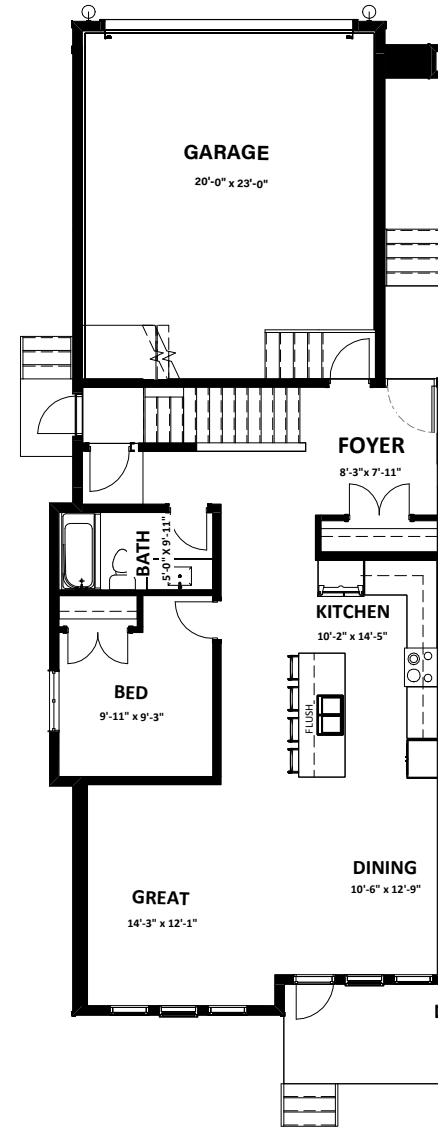
COPPERSTONE
AT COPPERFIELD



BASEMENT 963 SQ.FT. (UNFINISHED)
BASEMENT SUITE 851 SQ.FT. (OPTION)



MAIN 963 SQ.FT.
GARAGE 460 SQ. FT.



MAIN 991 SQ.FT. (OPTIONAL)
GARAGE 460 SQ. FT.

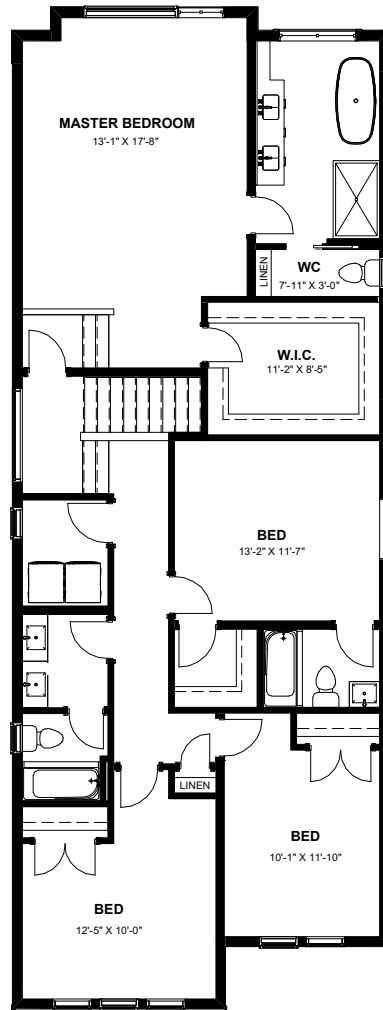
THE BRADFORD

3 BEDROOM + DEN + BONUS ROOM | 3 BATHROOM
2,344 SQ.FT. UNFINISHED BASEMENT 963 SQ.FT.

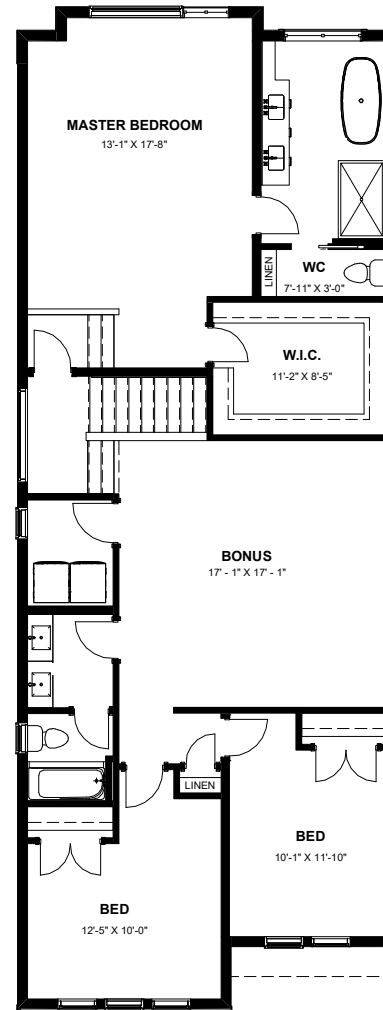
The developer reserves the absolute right to modify, cancel or extend this offer at any time without prior notice. Actual interiors, exteriors and views may be noticeably different than what is depicted in photographs. This is not an offering for sale. Any such offering may only be made with the applicable offer to purchase and agreement of sale and disclosure statement. Prices and availability are subject to change without notice. E. & O.E.

VESTA

COPPERSTONE
 AT COPPERFIELD



SECOND 1,381 SQ.FT.
(4 BEDROOM OPTION)



SECOND 1,381 SQ.FT. (BONUS ROOM)

THE BRADFORD

3 BEDROOM + DEN + BONUS ROOM | 3 BATHROOM
2,344 SQ.FT. UNFINISHED BASEMENT 963 SQ.FT.

The developer reserves the absolute right to modify, cancel or extend this offer at any time without prior notice. Actual interiors, exteriors and views may be noticeably different than what is depicted in photographs. This is not an offering for sale. Any such offering may only be made with the applicable offer to purchase and agreement of sale and disclosure statement. Prices and availability are subject to change without notice. E. & O.E.

VESTA

COPPERSTONE
 AT COPPERFIELD