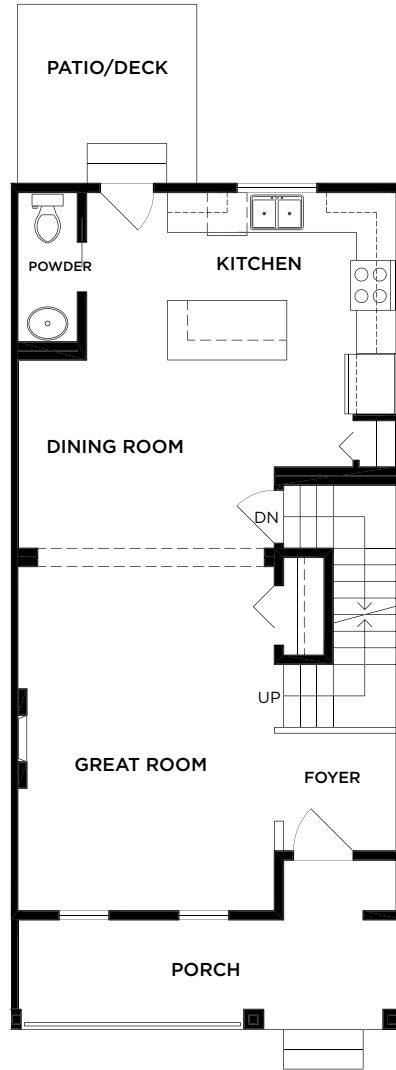
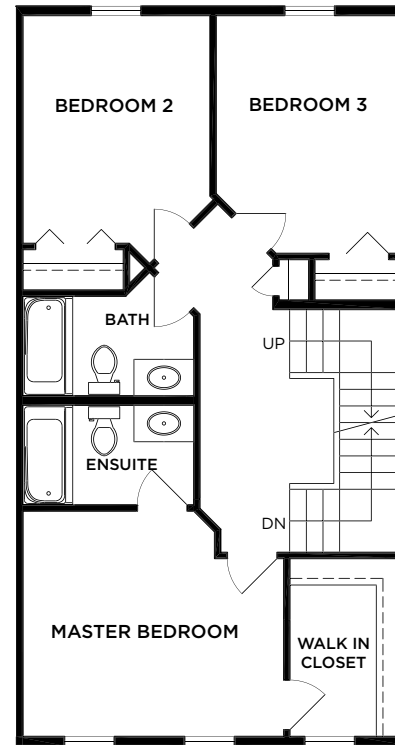


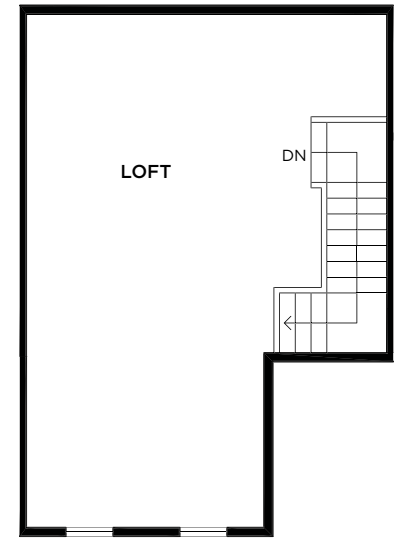
**Unfinished Basement 710 SQ.FT.**  
(Walkout, windows and doors may vary)



**Main 710 SQ.FT.**



**Second 728 SQ.FT.**



**Loft 355 SQ.FT.**

# B1

**ROWHOME | 3 BEDROOM | 3 BATHROOM WITH LOFT**  
**2,503 SQ.FT. INCLUDING 710 SQ.FT. UNFINISHED BASEMENT**

In our continuing effort to improve and maintain the high standards of Latimer Heights, Vesta Properties (Latimer) Ltd. reserves the right to modify or change plans, specifications, features and prices without notice. Materials may be substituted with equivalent or better, at Vesta Properties (Latimer) Ltd. sole discretion. All dimensions and sizes are approximate and are based on preliminary survey measurements. As reverse plans occur throughout the development please see architectural plans. E&O.E.

**VESTA**  
PROPERTIES

