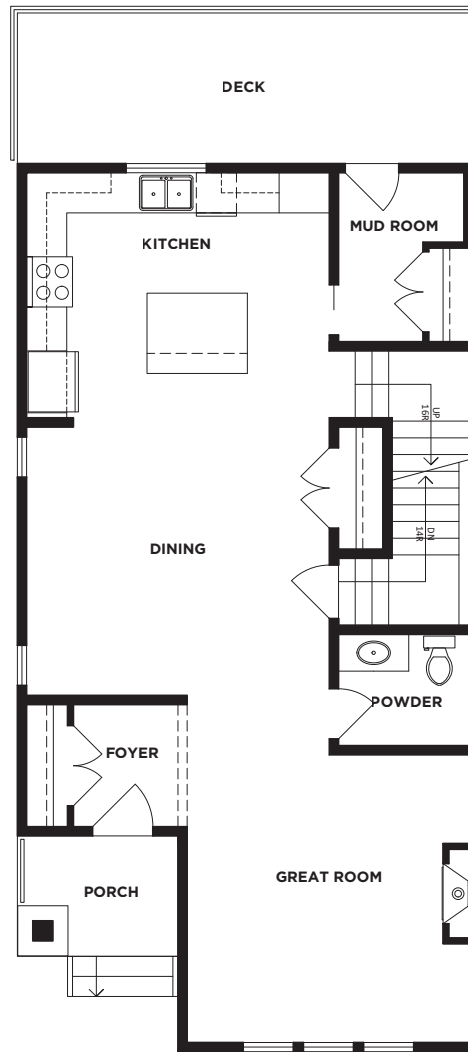
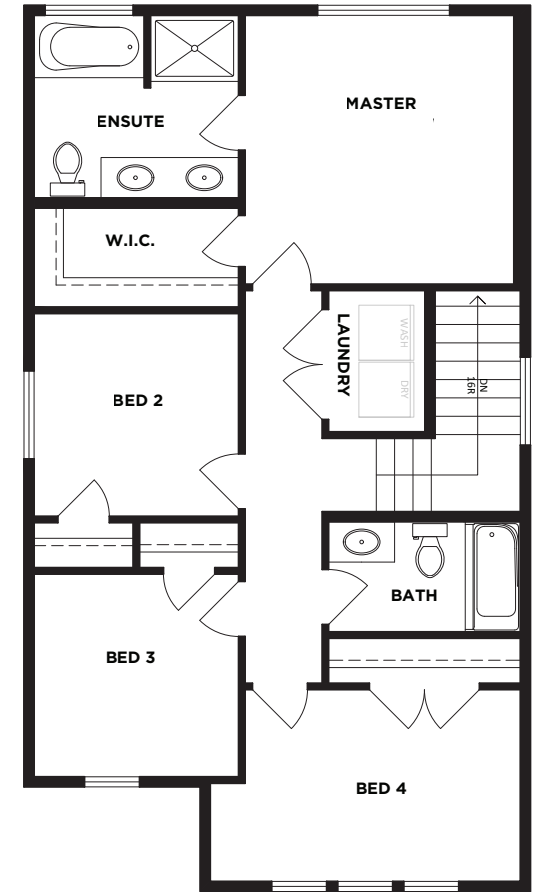


Unfinished Basement 932 SQ.FT.



Main 932 SQ.FT.



Second 840 SQ.FT.

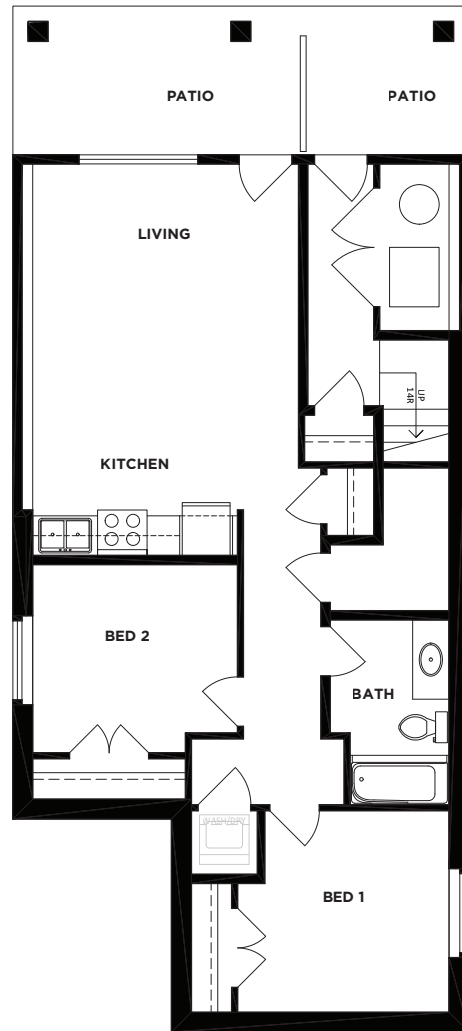
THE STAFFORD

SINGLE FAMILY LANE HOME | 4 BEDROOM | 2.5 BATHROOM
2,704 SQ.FT. INCLUDING 932 SQ.FT. UNFINISHED BASEMENT

In our continuing effort to improve and maintain the high standards of Latimer Heights, Vesta Properties (Latimer) Ltd. reserves the right to modify or change plans, specifications, features and prices without notice. Materials may be substituted with equivalent or better, at Vesta Properties (Latimer) Ltd. sole discretion. All dimensions and sizes are approximate and are based on preliminary survey measurements. As reverse plans occur throughout the development please see architectural plans. E&O.E.

VESTA
 PROPERTIES





Basement Suite 796 SQ.FT. (Optional)

THE STAFFORD | BASEMENT SUITE OPTION

2 BEDROOM | 1 BATHROOM

In our continuing effort to improve and maintain the high standards of Latimer Heights, Vesta Properties (Latimer) Ltd. reserves the right to modify or change plans, specifications, features and prices without notice. Materials may be substituted with equivalent or better, at Vesta Properties (Latimer) Ltd. sole discretion. All dimensions and sizes are approximate and are based on preliminary survey measurements. As reverse plans occur throughout the development please see architectural plans. E&O.E.

VESTA
PROPERTIES

