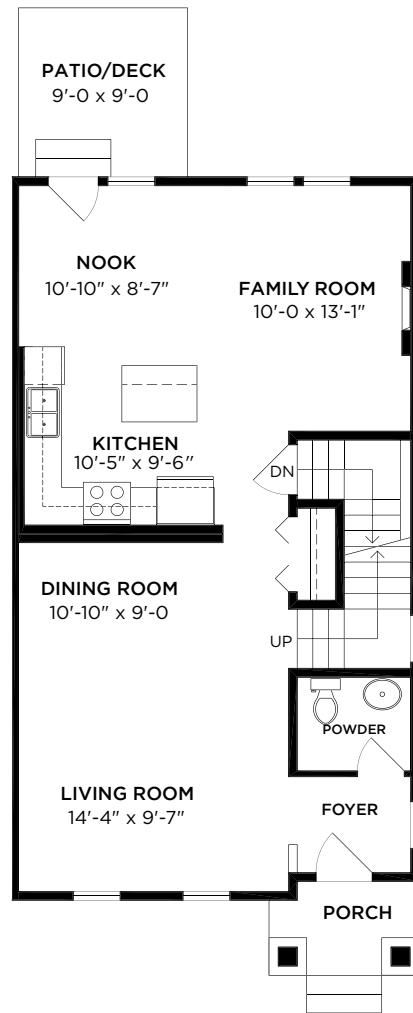
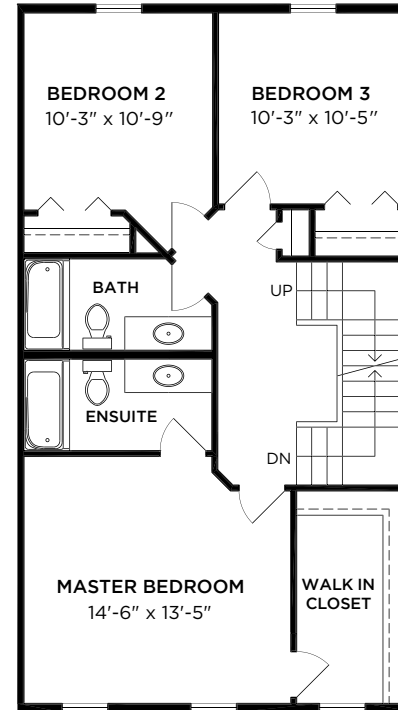


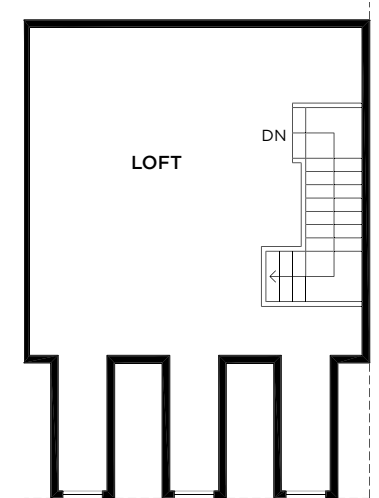
**Unfinished Basement 828 SQ.FT.**  
(Walkout, windows and doors may vary)



**Main 828 SQ.FT.**



**Second 834 SQ.FT.**



**Loft 355 SQ.FT.**

# A1

## ROWHOME | 3 BEDROOM | 3 BATHROOM WITH ATTIC 2,845 SQ.FT. INCLUDING 828 SQ.FT. UNFINISHED BASEMENT

In our continuing effort to improve and maintain the high standards of Latimer Heights, Vesta Properties (Latimer) Ltd. reserves the right to modify or change plans, specifications, features and prices without notice. Materials may be substituted with equivalent or better, at Vesta Properties (Latimer) Ltd. sole discretion. All dimensions and sizes are approximate and are based on preliminary survey measurements. As reverse plans occur throughout the development please see architectural plans. E&O.E.

