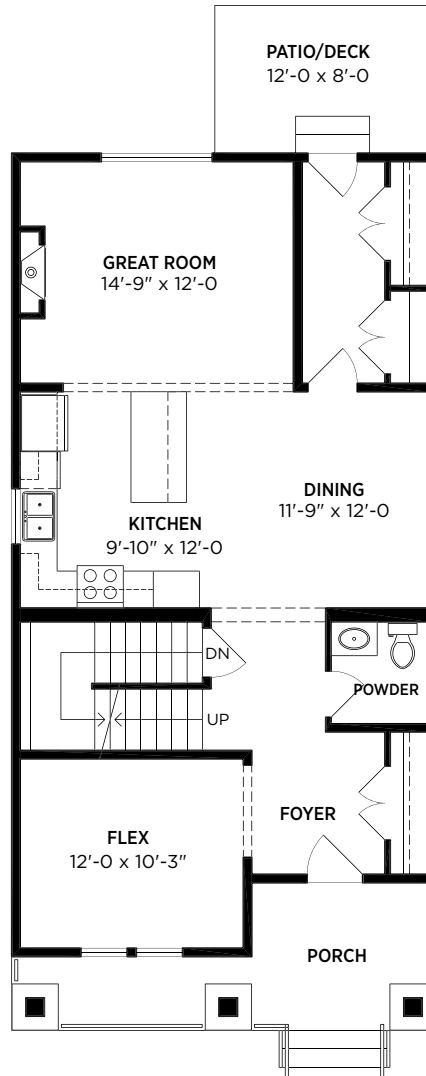
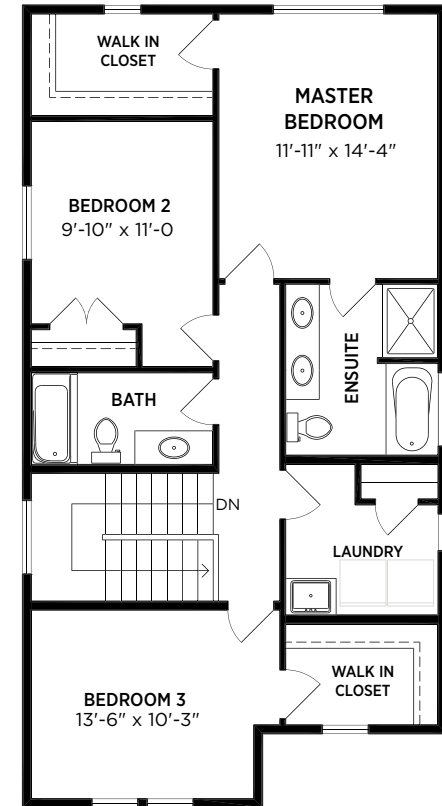


Unfinished Basement 960 SQ.FT.
(Walkout, windows and doors may vary)



Main 960 SQ.FT.



Second 892 SQ.FT.

THE PRESTON
SINGLE FAMILY LANE HOME | 3 BEDROOM + FLEX | 3 BATHROOM
2,812 SQ.FT. INCLUDING 960 SQ.FT. UNFINISHED BASEMENT

In our continuing effort to improve and maintain the high standards of Latimer Heights, Vesta Properties (Latimer) Ltd. reserves the right to modify or change plans, specifications, features and prices without notice. Materials may be substituted with equivalent or better, at Vesta Properties (Latimer) Ltd. sole discretion. All dimensions and sizes are approximate and are based on preliminary survey measurements. As reverse plans occur throughout the development please see architectural plans. E&O.E.

