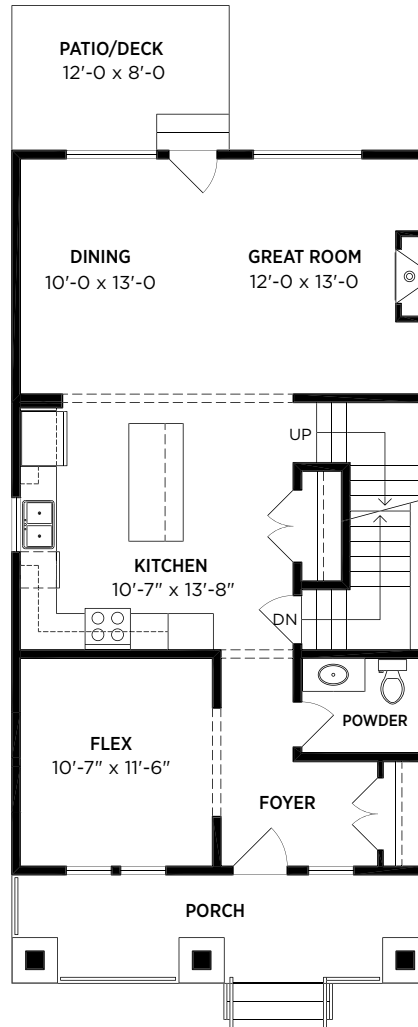
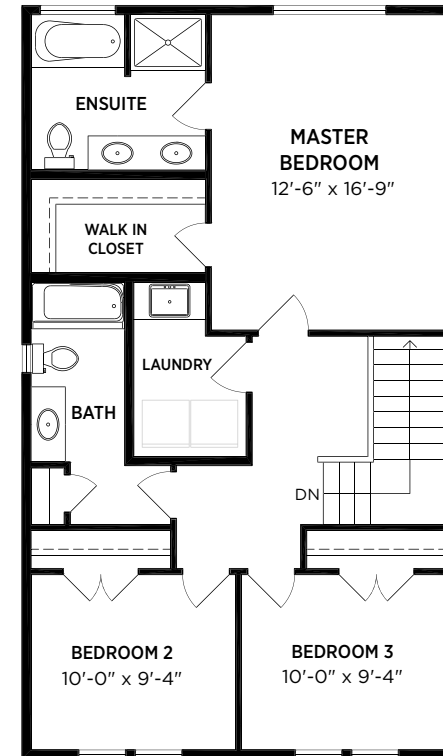


**Unfinished Basement 920 SQ.FT.**  
(Walkout, windows and doors may vary)



**Main 920 SQ.FT.**



**Second 872 SQ.FT.**

**THE MCKENZIE**  
SINGLE FAMILY LANE HOME | 3 BEDROOM + FLEX | 3 BATHROOM  
**2,712 SQ.FT. INCLUDING 920 SQ.FT. UNFINISHED BASEMENT**

In our continuing effort to improve and maintain the high standards of Latimer Heights, Vesta Properties (Latimer) Ltd. reserves the right to modify or change plans, specifications, features and prices without notice. Materials may be substituted with equivalent or better, at Vesta Properties (Latimer) Ltd. sole discretion. All dimensions and sizes are approximate and are based on preliminary survey measurements. As reverse plans occur throughout the development please see architectural plans. E&O.E.

